

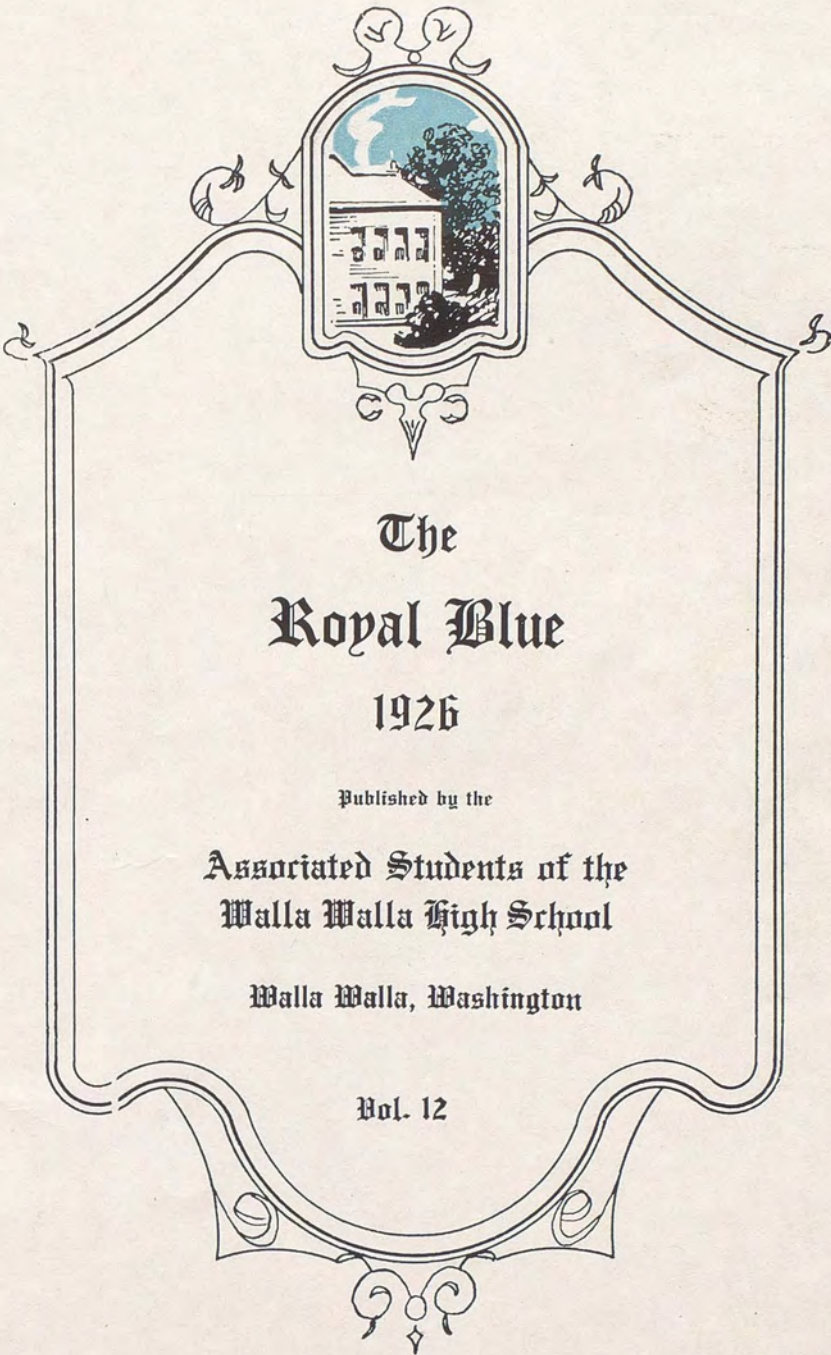
Copyright

The  
**Royal Blue**  
1926

David Lehrer  
Editor  
Eugene King  
Manager







The  
Royal Blue

1926

Published by the

Associated Students of the  
Walla Walla High School

Walla Walla, Washington

Vol. 12





# In Memoriam

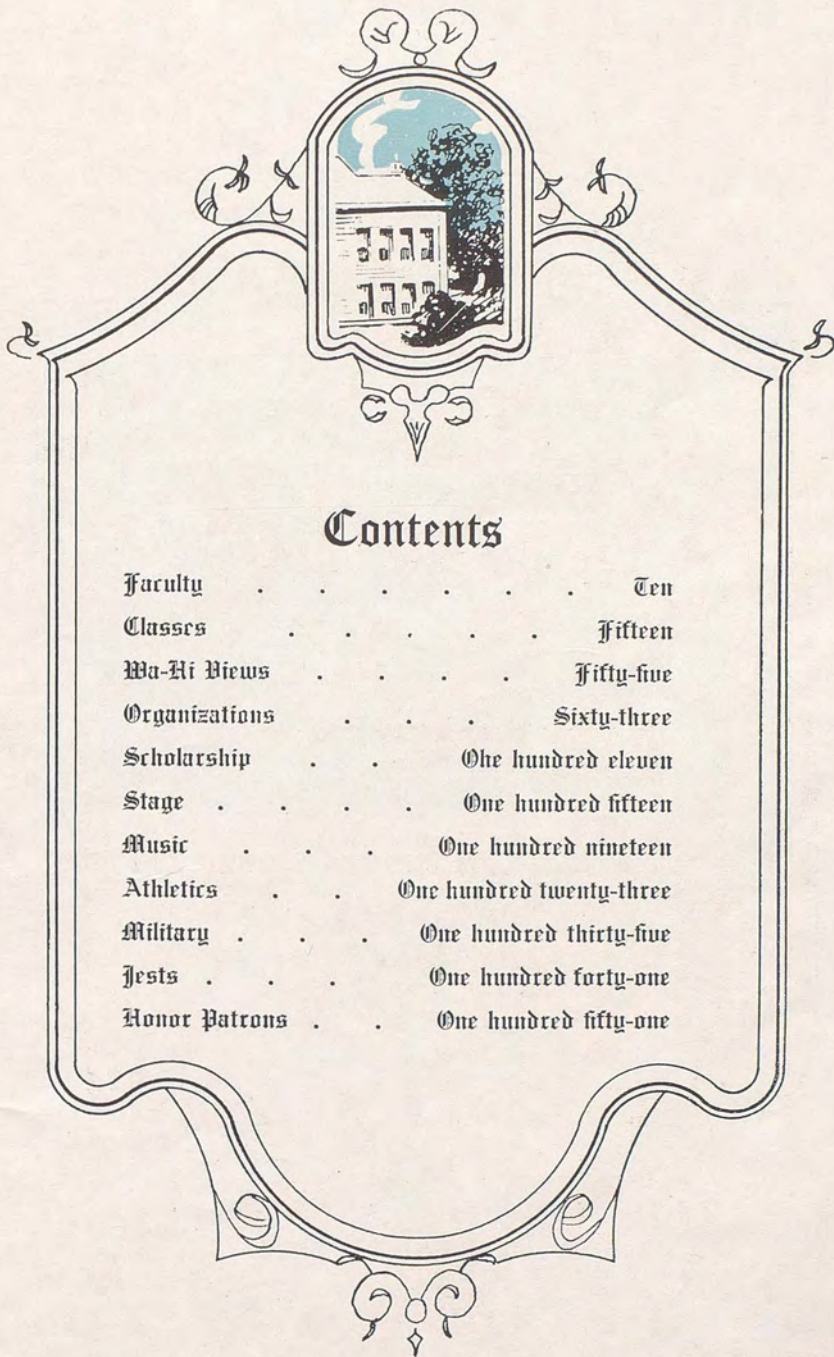
---

Mrs. Stella Hawley Retzer  
School Director

Albert Guthridge  
Class of '27

Janet House  
Class of '29

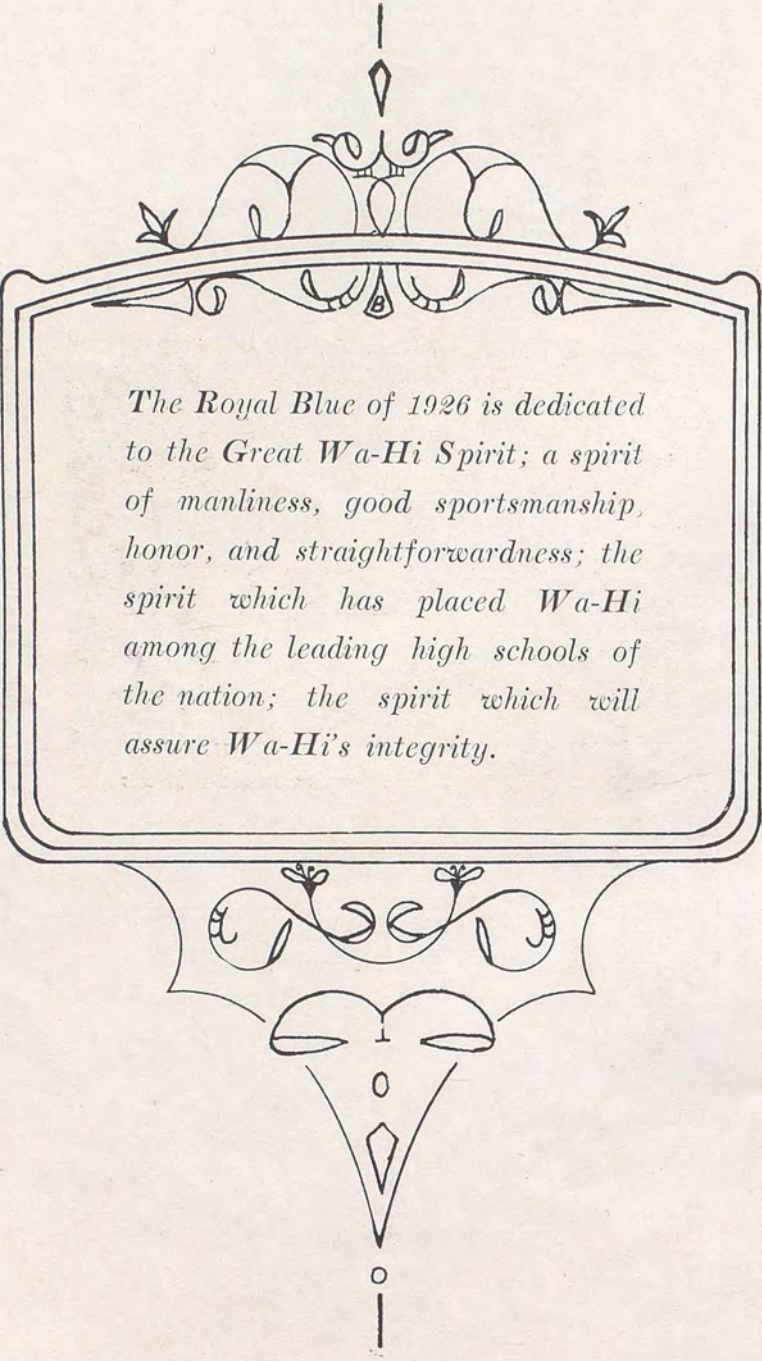




## Contents

Faculty . . . . .	Ten
Classes . . . . .	Fifteen
Wa-Hi Views . . . . .	Fifty-five
Organizations . . . . .	Sixty-three
Scholarship . . . . .	One hundred eleven
Stage . . . . .	One hundred fifteen
Music . . . . .	One hundred nineteen
Athletics . . . . .	One hundred twenty-three
Military . . . . .	One hundred thirty-five
Jests . . . . .	One hundred forty-one
Honor Patrons . . . . .	One hundred fifty-one





*The Royal Blue of 1926 is dedicated to the Great Wa-Hi Spirit; a spirit of manliness, good sportsmanship, honor, and straightforwardness; the spirit which has placed Wa-Hi among the leading high schools of the nation; the spirit which will assure Wa-Hi's integrity.*









W. M. Kern, Superintendent

A.B., University of Indiana

A.M., University of Indiana

Columbia University





W. A. Lacey, Principal

M.A., University of Kansas

A.B., Baker University





## Faculty



**KATHARINE H. BLYNN**  
 A.B. Indiana University  
 Stanford University  
 M.A. Whitman College  
*Head of the Mathematics Dept.*

**LUCILE McINTYRE**  
 A.B. University of Washington  
 University of Chicago  
 Columbia University  
 American Academy in Rome  
*Head of the Foreign Language Dept.*

**B. A. TACK**  
 A.B. Yorktown College  
 University of Washington  
*Physics*

**GERTRUDE MAXWELL**  
 B.L. Carleton College  
 University of Oxford, England  
*Head of the English Dept.*  
*Advisor of Eh Kah Nam*

**RUTH E. WENSTROM**  
 B.A. Carleton College  
*Dean of Girls*

**C. A. BIRELINE**  
 B.C.S. Dakota Wesleyan University  
 University of Wisconsin  
 University of Colorado  
*Head of the Commercial Dept.*

**PAUL M. REED**  
 B.S. University of Washington  
*Chemistry*

**MRS. JANE K. VANDERPOOL**  
 Western Reserve University Library School  
*Librarian*

**C. A. STEELSMITH**  
 M.D. Teachers' College of Iowa  
 Stout Institute Diploma  
 University of Wisconsin  
 Bradley Polytechnic  
*Manual Arts*

**PAULINE FORD**  
 B.A. University of Idaho  
*History*





## Faculty

ELIZABETH SOLBERG  
B.S. South Dakota State College  
*History*

FRANCES A. YEOMANS  
Ph.M. University of Chicago  
*History*

CYNTHIA HORNIBROOK  
A.B. Willamette University  
*Mathematics*

I. BURTON SEVY  
B.S. South Dakota College  
Northwestern University  
*English*

LAURA ELIZABETH BOUCHER  
B.L. University of California  
M.A. University of Washington  
*English*  
*Advisor of the Royal Blue*

SABIN RICH  
B.S. Whitman College  
*Director of Athletics*

IVA PETERSON  
B.S. Oregon Agricultural College  
University of Washington  
University of Oregon  
*English*

HARRISON CLARK  
B.A. University of North Dakota  
*Commercial*  
*Attendance Officer*

GRACE MILLBROOK  
B.S. Hamline University  
Minnesota State University  
*Mathematics*

PEARL BONNER  
B.E. B.S. University of Washington  
*Commercial Geography*







## Faculty



DOROTHY JONES  
 A.B. University of Colorado  
 B.C. University of Colorado  
 University of California  
*Commercial*

M. E. SCHEECE  
 B.S. University of Dakota  
*Mathematics*



MAJOR JESSE M. HOLMES  
 U.S.A. Retired  
 Colonel Infantry Reserves  
*Prof. of Military Tactics R.O.T.C.*

DOLLY V. CORN  
 A.B. Franklin College  
*English*



ESTHER LAMB  
 B.A. University of North Dakota  
*Physical Education*

LLOYD ENLUND  
 B.S. University of Oregon  
 M.A. University of Oregon  
*Commercial Arithmetic*



*Laura E. Williams*  
 JOHN WESLEY SMITH  
 A.B. Hamline University  
*Commercial Geography*

LAURA E. WILLIAMS  
 A.B. Northwestern University  
*English*



BLANCHE REED  
 A.B. De Pauw University  
 University of Chicago  
*Latin*

M. G. HARNDEN  
 B.S. D.H. Oklahoma Agricultural College  
*Agriculture*

*4  
Reedie*





## Faculty

RUSH JORDAN  
B.S. University of Idaho  
*Economics, Sociology*  
*Head of the History Department*

MARY K. YATES  
B.S. Washington State College  
*Domestic Science*

FAY HAMM  
A.B. Whitman College  
*English*

BESS KIRK  
B.A. University of Minnesota  
*Mathematics*

PHOEBE BLALOCK  
B.S. Whitman College  
*Biology*

LILLIAN LINDNER  
A.B. University of Michigan  
*Latin*

H. C. TILLEY  
University of Idaho  
*Band and Orchestra*

DELLA YANCEY  
B.A. Carleton College  
M.A. University of Washington  
*Algebra*

DOROTHY DEANE  
B.A. University of North Dakota  
*History and Civics*

EMMA ALBER  
Peru State Teachers' College  
Gregg School, Chicago, Illinois  
*Shorthand and Typewriting*







## Faculty



E. W. MELOSH  
*Inspector of Buildings and Grounds*

CARRIE CULTRA  
A.B. University of Nebraska  
*Commercial*

C. M. BERNIER  
B.L. and B.S. McGill University of Science  
B.A. Boston University  
*Latin and French*

JOSEPHINE HAGERMAN  
A.B. Ohio Wesleyan University  
Middlebury School of Spanish  
*Spanish*

FRANCES LEUTHY  
*Office Secretary*

*Faculty Members Whose Pictures Were Unobtainable*

MRS. LILLIAN R. LEONARD  
Ph.B. University of Chicago  
*English*

JOSEPH EVERSOLE  
*Sgt. D. E. M. L.*

Now is the most vital time in our life—these years of learning. These are the years of our life when we make the friendships which mean our future prosperity and happiness—the friendships which make and mold our characters. One of the greatest friends and character builders of our time is the teacher; the one who inspires us to better things; the one who reveals to us the knowledge of the world; the one who works for our benefit; the one whose personality develops righteousness and honesty within us. We, the students, should realize the greatness of our teachers, not as mere instructors but as the makers of our character in these years when our life is so vital; as the builders of our future success and as the makers of our country.

FRANCIS M. LEROUX,

*President of Associated Students.*





Classes





# Wa-Hi's First Mid-Year Graduates

IN THE

THIRTY-FOURTH ANNUAL COMMENCEMENT

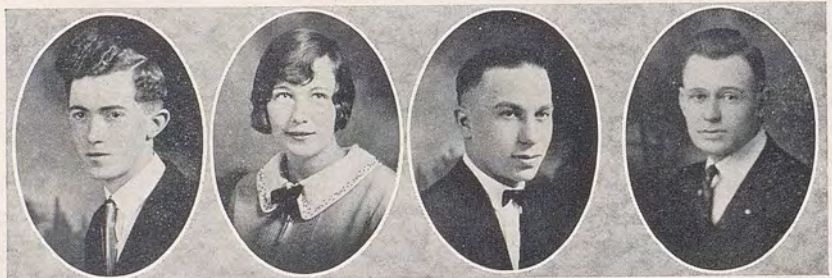
OF

WALLA WALLA HIGH SCHOOL

JANUARY 24, 1926

## Officers of the Midyear Class

- President* ..... Robert Summers
- Vice-President* ..... Verna Lutz
- Secretary-Treasurer* ..... Lewis Lutzer
- Advisor* ..... Principal W. A. Lacey



Summers

Lutz

Lutzer

Mr. Lacey





## Mid-Year Graduates

**JOHN BACHTOLD**  
*General Course*  
 Baseball (1, 2)

**MYRTLE BIERSNER**  
*General Course*  
 Spanish Club; Vivantes; O. G. A. (4) Art Club (3); Reporter Spanish Club (3); Secretary Spanish Club (4); Secretary Vivantes (4); Girls' Council (3)

**BRUCE CASSENS**  
*Commercial Course*  
 Non-Com Club (3, 4); O. G. A. (3, 4)

**CHARLES CHASE**  
*Commercial Course*

**CLIFFORD EBBERT**  
*Commercial Course*

**ALLEN GERMAN**  
*Agricultural Course*  
 Ag Club (1, 2, 3, 4)

**DALE LANE**  
*General Course*  
 Officers Club (3, 4); Non-Com Club (1); Senate (3); Secretary Officers Club (3); President Officers Club (4); Secretary Student Body (4); Judicial Board (4); Major R. O. T. C. (4)

**CLIFFORD LONG**  
*Scientific Course*  
 Officers Club (4); Captain R. O. T. C. (4); Rifle Team (3, 4)

**PEARL LONG**  
*Commercial Course*  
 O. G. A. (4); Secretary O. G. A. (4)

**ROBERT McLACHLAN**  
*Commercial Course*  
 National Honor Society; Scholarship Awards







## Mid-Year Graduates

**DOROTHY MOORE**

*Commercial Course*

Glee Club (1, 2); Camp Fire (2, 3); Athletics (2, 3, 4); Baseball (2, 3); Treasurer Athletics (3); Basketball (1, 3); Volleyball (1, 2, 3)

**CHARLES NEHER**

*Scientific Course*

Glee Club

**FLORENCE PLOOF**

*General Course*

Nissaki Camp Fire

**BERTHYLE STOCKTON**

*Commercial Course*

Vivante (2, 3, 4); Glee Club (2, 3); Baseball (1)

**ROBERT SUMMERS**

*General Course*

W. W. Club (1, 2, 3, 4); Secretary W. W. Club (4); President Class (4); Baseball (1)

**SAM WARREN**

*Modern Language Course*

Non-Com Club; French Club; Officers Club; Senior Play (3); Senate; Annual (3); Eh Kah Nam (4); El Adrea-Gimmel Teth Play (4)

**VELMA WHITING**

*General Course*

Klahanee Camp Fire (3, 4, 5); Spanish Club (5); President Klahanee Camp Fire (4); Treasurer Klahanee Camp Fire (5)

**LEWIS LUTCHER**

*General Course*

Classical Club (1, 2); Non-Com Club (3, 4); W. W. Club (4); Boys' Class Council (2); Pep Band (3, 4); Treasurer Class (4); Football (2, 3, 4); Band (1, 2, 3, 4); Orchestra (1, 2, 3)

*Mid-Year Graduates Whose Pictures Were Unobtainable:*

JAMES EDWARDS  
 THOMAS HARPER  
 WILLIAM JOHNSON  
 RUSSELL WEYRAUCH  
 VERNA LUTZ

JOHN PRATHER  
 FRANK PIERSOL  
 JAY REYNOLDS  
 DONALD ROHN  
 MARTHA MOORE (page 37)





## Seniors

CHESTER ADAMS

*General Course*

Non-Com Club (4); Track (3, 4)

LAVENIA ALEXANDER

*Modern Language Course*

El Adrea (4)

ELEANORE ALLISON

*General Course*

Watanopa Camp Fire (4); French Club (4); Reporter Watanopa Camp Fire (4); Vice-President Watanopa Camp Fire (4)

GENEVIEVE ALLISON

*General Course*

Vivantes (4)

BERYL ALLISON

*General Course*

KATIE ANTES

*Commercial Course*

O. G. A. (4); Watanopa Camp Fire (3, 4); Vice-President Watanopa Camp Fire (4)

CLARE APPLGATE

*Modern Language Course*

Gimmel Teth (4); French Club (4); Vice-President Class (4); Interclass Council (4); Judicial Board (4)

LELAND ARCHER

*Classical Course*

Classical Club (2, 3); French Club (3); Non-Com Club (3); Officers' Club (4); Captain R. O. T. C. (4)

GERTRUDE ARDREY

*General Course*

O. G. A. (4)

STAN ATKIN

*Scientific Course*

Eh Kah Nam (4); Orchestra (3); El Adrea-Gimmel Teth Play (4); Senior Play (4)

*Gertrude Ardrey*







## Seniors

**VERNON BAKER**  
*General Course*  
 Spanish Club (3, 4)

**FLORENCE BATHE**  
*General Course*  
 Nissaki Camp Fire (4)

**LAUREL BEACH**  
*Scientific Course*  
 Glee Club (3, 4)

**VERA BENNETT**  
*Commercial Course*  
 O. G. A. (2, 3, 4); Spanish Club (2, 3);  
 Glee Club (1, 2, 3); Sec. O. G. A. (2)

**JAMES BENSON**  
*Commercial Course*  
 French Club (1, 2); Classical Club (2); O.  
 G. A. (3, 4); W. W. Club (4); Band (2, 3,  
 4); Tennis (1, 2, 3, 4); Basketball (1, 3, 4);  
 Track (4); Football (4); Clark Citizenship  
 Medal (4)

**ARCHIE BERREMAN**  
*Commercial Course*  
 Boys' Class Council (3); Pep Band (4);  
 Band (1, 2, 3, 4)

**BLANCHE BIRSNER**  
*Commercial Course*  
 Vivante (2, 3, 4); Spanish Club (2, 3, 4);  
 O. G. A. (4); Art Club (3); Vice-Pres.  
 Vivantes (3); Reporter Spanish Club (4)

**MARGUERITE BIRSNER**  
*Scientific Course*  
 Nissaki Camp Fire (2, 3, 4); National  
 Honor Society (4); Spanish Club (1, 2, 3);  
 Secretary Nissaki Camp Fire (3); Vice-  
 President Nissaki Camp Fire (4); Classi-  
 cal Club (3); Glee Club (1, 3)

**VERA BLACKMAN**  
*Commercial Course*  
 O. G. A. (1, 2, 3, 4); Basketball (1)

**MARTHA BLAHM**  
*Commercial Course*  
 O. G. A. (4); Spanish Club (4); Glee Club  
 (3); Eh Kah Nam (4); Reporter O. G.  
 A. (4)





## Seniors

**MAJOR BOHLER**  
*General Course*

**HAROLD BOYLAN**  
*Commercial Course*  
Secretary O. G. A. (4); Eh Kah Nam (4);  
Debate (4); Senior Play (4)

**IRVING BRANNIN**  
*General Course*

**FLORA BROWN**  
*Scientific Course*  
Waukeena Camp Fire (3, 4)

**MYRTLE BURDICK**  
*Modern Language Course*  
Gimmel Teth (2, 3, 4); French Club (3);  
Treasurer Gimmel Teth (3); Judicial Board  
(3); Annual Staff (4); El Adrea-Gimmel  
Teth Play (3)

**JACOB BUTHERUS**  
*Commercial Course*  
O. G. A. (2, 3, 4)

**ALEXANDER CAMPBELL**  
*Classical Course*  
French Club (3, 4); Classical Club (3, 4);  
National Honor Society (4); Secretary  
French Club (4); Non-Com Club (3);  
Treasurer Classical Club (4); Scholarship  
Award (1)

**JANICE CARMICHAEL**  
*Classical Course*  
Ayita Camp Fire (2, 3, 4); Vice- Presi-  
dent Ayita Camp Fire (4)

**ALLEN COCHRAN**  
*Scientific Course*  
Track (4)

**MARVEL COFFIN**  
*Commercial Course*  
O. G. A. (4)







## Seniors



**PURDY CORNELISON**

*Scientific Course*  
 Spanish Club (3, 4); Annual Staff (3, 4);  
 Scholarship Award (1); Rifle Team (3).

**DOROTHY CRAWFORD**

*Commercial Course*  
 Nissaki Camp Fire (4); Art Club (3); Ath-  
 letae (3, 4); Reporter Athletae (3, 4); Bas-  
 ketball (3, 4); Volleyball (3); Baseball (3);  
 Eh Kah Nam Staff (4).

**ALLEN CROCKER**

*Scientific Course*  
 Non-Com. Club (3); President Non-Com  
 Club (3); O. G. A. (3, 4); Reporter O. G.  
 A. (4); Senate (3, 4); Annual Staff (3);  
 President Royal Blue Society (4); Eh Kah  
 Nam Staff (4); Debate Team (4); Class  
 Debate (2); Rifle Team (2, 4); Senior Play  
 (4); National Honor Society (4).

**MAXINE CULLY**

*Modern Language Course*  
 Gimmel Teth (3, 4); French Club (3).

**BYRON DAGUE**

*Agricultural Course*  
 Ag Club (1, 2, 3, 4); W. W. Club (3, 4);  
 Secretary W. W. Club (4); Judicial Board  
 (4); Basketball (3, 4); Track (3).

**VIRGIL DAVIN**

*Scientific Course*  
 French Club (1, 2, 3); Board of Control (4)

**WALLACE DAVIS**

*Scientific Course*

**FRANK DAVISON**

*Modern Language Course*  
 Classical Club (1); Band (2, 3, 4).

**MILDRED DEMARIS**

*General Course*

**RAYMOND DERRICK**

*Modern Language Course*  
 Classical Club (2, 3, 4); Spanish Club (3,  
 4); President Classical Club (3); Secretary  
 Spanish Club (3); Treasurer Spanish Club  
 (4); Pep Band (4); Band (1, 2, 3, 4).





## Seniors

**KARL DeGRAFFENREID**

*General Course*

Entered from Brumley High School, Brumley, Missouri.

**HAZEL DEYE**

*General Course*

Klahanee Camp Fire (3, 4); Vice-President Klahanee Camp Fire (4); Spanish Club (1); Girls' Council (3); Art Club (3, 4); Secretary Art Club (4).

**WINIFRED DUNPHY**

*Classical Course*

Gimmel Teth (1, 2, 3, 4); Classical Club (3, 4); National Honor Society (4); Reporter Class (4); Eh Kah Nam Staff (4); Senior Play (4).

**LUCILLE EAGON**

*Commercial Course*

O. G. A. (3, 4); Glee Club (1, 2, 3).

**ELSIE ECKHARDT**

*Commercial Course*

**HARRY EHRlich**

*General Course*

W. W. Club (4); Football (4); Rifle Team (1, 2).

**GLENN EUBANKS**

*General Course*

Classical Club (2, 3); Track (1); El Adrea-Gimmel Teth Play (5); Pep Band (3, 4, 5); Band (1, 2, 3, 4); Senior Play (4).

**CARM FARRENS**

*General Course*

W. W. Club (4, 5); Judicial Board (4); Football (2, 3, 4, 5); Basketball (3); Track (3); Band (2, 3, 4, 5); Pep Band (4, 5)

**MARVEL FERGUSON**

*Commercial Course*

Ayita Camp Fire (3, 4).

**ARLOA FERNEY**

*Commercial Course*

Klahanee Camp Fire (3, 4); O. G. A. (4).







## Seniors

**HELEN FIELDS**

*Commercial Course*

O. G. A. (4); President O. G. A. (4); Reporter O. G. A. (4).

**DOROTHY FLUALLEN**

*Commercial Course*

Spanish Club (2, 3); Girl Reserves (1); Nissaki Camp Fire (2); Secretary Nissaki Camp Fire (2); O. G. A. (2, 3, 4); President O. G. A. (4); Basketball (3); Baseball (2); Annual Staff (3); Eh Kah Nam Staff (4).

**LOU FULLER**

*General Course*

Entered from La Grande High School, La Grande, Oregon.

**RALPH GIBBONS**

*Scientific Course*

Spanish Club (2); Annual Staff (3); Basketball (3, 4, 5); Football (4); Senior Play (4); Band (1, 2, 3)

**CLARA GIES**

*Commercial Course*

O. G. A. (4); Glee Club (1)

**ARTHUR GEIST**

*Commercial Course*

**LELA GILMAN**

*Commercial Course*

Glee Club (1); Klahanee Camp Fire (3, 4); O. G. A. (4)

**RICHARD GINN**

*Scientific Course*

Non-Com Club (2, 3); Secretary Non-Com Club (2); Secretary Class (4).

**JAMES GLASSPOOL**

*Scientific Course*

Band (3, 4); Senior Play (4).

**ROBERT GOLDEN**

*Modern Language Course*

Non-Com Club (3); Officers' Club (4); Vice-President Officers' Club (4); Football (4).





## Seniors

### HELEN GOOGINS

*General Course*

Classical Club (1, 2); Ac Ca Wa Ya (1, 2);  
Classical Club (1, 2); Ac Ca Wa Ya (1, 2);  
Nissaki Camp Fire (3, 4); Secretary Nis-  
saki Camp Fire (4)

### MAMIE GRAYBILL

*Classical Course*

Klahanee Camp Fire (2); Classical Club  
(3, 4); Okihi Camp Fire (3, 4); National  
Honor Society (4)

### HAZEL GROSS

*General Course*

French Club (3, 4); Ayita Camp Fire (3,  
4); National Honor Society (4); President  
French Club (3); President National Honor  
Society (4); President Girls' Council (4);  
Eh Kah Nam Staff (4); Senior Play (4)

### HOUGHTON CROSS

*Modern Language Course*

Spanish Club (3, 4); Non-Com Club (4)

### HERSCHEL HADLEY

*General Course*

Senate (4); Classical Club (2); Yell King  
(4); Debate (3, 4); Band (1, 2, 3)

### ETHEL HARDING

*Classical Course*

Classical Club (3, 4); French Club (3, 4);  
National Honor Society (4)

### KATHRYN HARMON

*Scientific Course*

### LUCILLE HARP

*Scientific Course*

Watanopa Camp Fire (3, 4); French Club  
(2); Vice-President Watanopa Camp Fire;  
Volleyball (3); Basketball (2, 3)

### ALBERT HARRIS

*Scientific Course*

Spanish Club (1, 2); Debate Team (3, 4)

### VELMA HART

*Commercial Course*

Vivantes (1, 2, 3, 4); O. G. A. (3, 4); Girl  
Reserves (1)







## Seniors

**LEONA HARTWIG**  
*Classical Course*

**ELSIE HARVEY**  
*Modern Language Course*  
French Club (1, 2); Classical Club (1); El Adrea (1, 2, 3, 4); President El Adrea (4); El Adrea-Gimmel Teth Play (3); Girls' Council (3)

**GRACE HAZELBAKER**  
*Commercial Course*  
O. G. A. (4); Waukeenah Camp Fire (4)

**JOSEPHINE HEALY**  
*General Course*  
Watanopa Camp Fire (3, 4); Treasurer Watanopa Camp Fire (4); Volleyball (3); Basketball (3); Baseball (3)

**ARTHUR HERRING**  
*Modern Language Course*  
French Club (3, 4); Classical Club (1, 2); Class Council (1, 2, 4); Track (3)

**VERA HOGBEN**  
*Commercial Course*  
Athletae (2, 3, 4); Klahanee Camp Fire (2, 3, 4); Glee Club (1); Volleyball (1, 2)

**EDYTHE HOLDEREID**  
*General Course*  
El Adrea (3, 4); Spanish Club (3, 4); El Adrea-Gimmel Teth Play (4)

**VIRGINIA HUNDLEY**  
*General Course*  
Nissaki Camp Fire (2, 3, 4); National Honor Society (4); Spanish Club (2, 3); President Nissaki Camp Fire (2); Treasurer Nissaki Camp Fire (4); Treasurer National Honor Society (4); Girls' Council (4); Eh Kah Nam (4); Orchestra (3); Senior Play (4)

**J. B. HUNLEY**  
*General Course*  
Classical Club (4); President Classical Club (4); Entered from John Marshall High School, Richmond, Virginia.

**THELMA HUTSELL**  
*Modern Language Course*  
El Adrea (1, 2, 3, 4); Girl Reserves (1); Spanish Club (3, 4); Classical Club (1, 2); Treasurer El Adrea (3); Sponsor R. O. T. C. (4); President Girl Reserves (1); Reporter El Adrea (4); Girls' Council (3, 4); Secretary Girls' Council (4); Senior Play (4)





## Seniors

### HAROLD JACKSON

*Commercial Course*

Non-Com Club (2, 3); Officers Club (4);  
Treasurer Non-Com Club (3); Assistant  
Yell Leader (4)

### JOSEPHINE JANTZEN

*Modern Language Course*

### CHARLES JOHNSON

*Commercial Course*

O. G. A. (4); Annual Staff (3); Non-Com  
Club (2, 3); Vice-President O. G. A. (4);  
Eh Kah Nam (4)

### PATRICIA KANE

*Classical Course*

French Club (3); Gimmel Teth (3, 4);  
Classical Club (3, 4); National Honor So-  
ciety (4); President Classical Club (4);  
Vice-President Classical Club (3); Treas-  
urer Class (3); Eh Kah Nam Staff (4);  
Senior Play (4)

### HAROLD KEELAN

*Commercial Course*

Non-Com Club (2, 3)

### DOROTHY KELLY

*General Course*

El Adrea (2); Nissaki Camp Fire (3, 4)  
National Honor Society (4); Treasurer Nis-  
saki Camp Fire (4)

### JACK KIRKMAN

*Classical Course*

Classical Club (2, 3, 4); Non-Com Club (3);  
Senate (3, 4); Senate Debate Team (4);  
Secretary Classical Club (3); Secretary  
Non-Com Club (3); Annual Staff (3); Eh  
Kah Nam Staff (4)

### JOE KIRKMAN

*General Course*

Non-Com Club (3); Art Club (3); Classical  
Club (3, 4); Officers' Club (4); Treasurer  
Officers Club (4); Reporter Classical Club  
(4)

### ETHEL KOPF

*Classical Course*

Art Club (4); Classical Club (4); Entered  
from Twin Falls High School, Twin Falls,  
Idaho.

### MARIE KRAINING

*Commercial Course*

Basketball (1, 3); Volleyball (1, 3); Base-  
ball (3)







## Seniors

**TOM LEAKE**

*Scientific Course*

Spanish Club (4); French Club (4); Track (4); Tennis (4); El Adrea-Gimmel Teth Play (4); Senior Play (4)

**ROBERT LENFESTY**

*Scientific Course*

Spanish Club (1, 2, 4); Senate (2, 3, 4); Non-Com Club (2, 3); Track (3, 4); Rifle Team (2, 3)

**SARAH LEONARD**

*General Course*

El Adrea (1, 2, 3, 4); French Club (2, 3); Vice-President El Adrea (4)

**FRANCIS LEROUX**

*Modern Language Course*

Classical Club (1, 2); Spanish Club (1, 2); President Student Body (4); Judicial Board (2, 3, 4); President Class (2, 3); Vice-President Class (2); Reporter Class (1); Tennis (3, 4); Band (1, 2, 3, 4); Pep Band (2, 3, 4)

**LORRAINE LEROUX**

*Classical Course*

Classical Club (1, 2); Spanish Club (2, 3); Gimmel Teth (4); Athletae (2, 3, 4); National Honor Society (4); Secretary Athletae (3); Vice-President Class (1); Tennis (2); Basketball (2, 3); Annual Staff (3); Scholarship Award (3); Editor Eh Kah Nam (4); El Adrea-Gimmel Teth Play (4); Head Cashier (4); Girls' Council (2)

**LEAH LESTER**

*Classical Course*

Tillicum Camp Fire (1, 2, 3, 4); Classical Club (2, 3, 4); Inter-Class Council (4); Vice-President Tillicum Camp Fire (3, 4); Senior Play (4)

**WILLIAM LILLEY**

*Scientific Course*

French Club (3); Non-Com Club (3); Art Club (3); Annual Art Staff (4)

**JOE LOCATI**

*Commercial Course*

O. G. A. (1); Eh Kah Nam (4); National Honor Society (4)

**EDWIN MacMURDO**

*General Course*

**HAROLD McLENNAN**

*General Course*

Pep Band (4); Ag Club (3, 4); Band (4)





## Seniors

**STEPHEN McINTYRE**

*Agricultural Course*  
Ag Club (1, 2, 3, 4)

**CLARK McKINNEY**

*General Course*  
Ag Club

**LUCYRETA MacMARTIN**

*Modern Language Course*  
Gimmel Teth (1, 2, 3, 4); French Club (3);  
Secretary French Club (3); Judicial Board  
(4); Sponsor R. O. T. C. (4)

**DAVID MANN**

*Scientific Course*  
Senate (1, 2, 3, 4); Vice-President Senate  
(2); President Senate (3, 4); Class Presi-  
dent (1, 2); Annual Staff (3); Rifle Team  
(2, 3)

**EDWARD MELOSH**

*General Course*  
Band (1, 2, 3, 4)

**RALPH MILLER**

*Agricultural Course*  
Ag Club (1, 2, 3, 4); Officers Club (4); Sec-  
retary Ag Club (2); Reporter Officers Club;  
Vice-President Ag Club (2); President Ag  
Club (4); Rifle Team (4)

**JUANITA MONTGOMERY**

*General Course*

**CHESTER MORRISON**

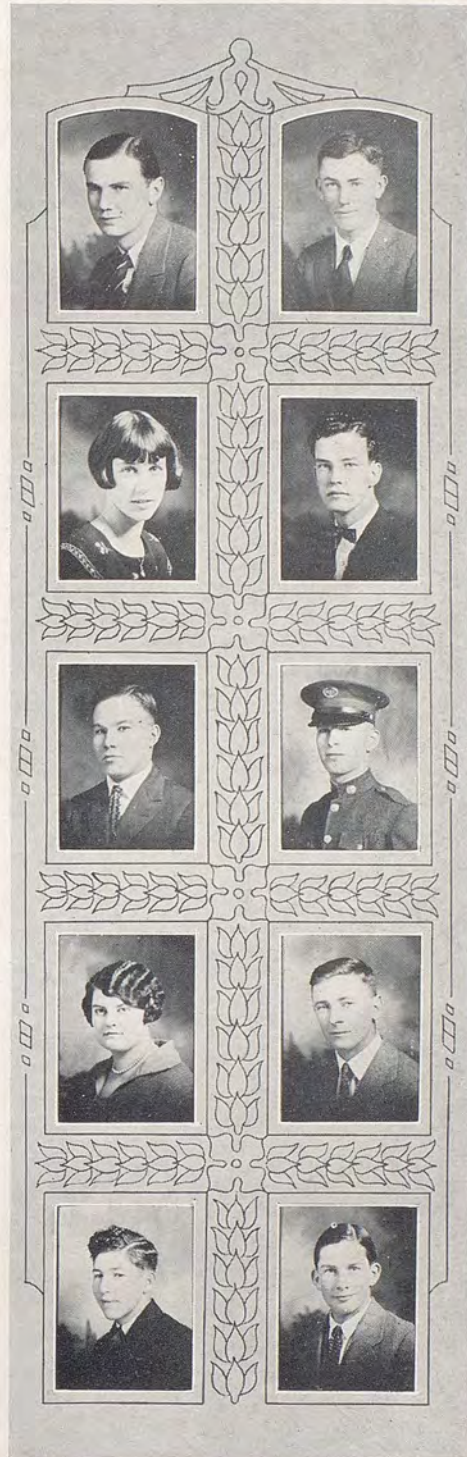
*General Course*  
Officers Club (4); Non-Com Club (3)

**ANDREW MOTZEL**

*Commercial Course*  
Non-Com Club (3)

**CLARK NELSON**

*General Course*







## Seniors

**NYDA NELSON**

*General Course*

Girl Reserves (1); Ac Ca Wa Ya (2);  
Classical Club (1, 2); Spanish Club (2, 3,  
4); Basketball (1)

**RALEIGH NELSON**

*General Course*

Non-Com Club (4)

**DAVID O'HAIR**

*General Course*

**RUTH OSTERMAN**

*Modern Language Course*

Gimmel Teth (1, 2, 3, 4); Classical Club (1,  
2); French Club (3); Royal Blue (3, 4);  
Girls' Class Council (2); Judicial Board  
(4); Eh Kah Nam Staff (4); El Adrea-  
Gimmel Teth Play (4)

**HENRIETTA OWENS**

*Modern Language Course*

Classical Club (1, 2, 3, 4); French Club (3);  
Klahanee Camp Fire (3); Ac Ca Wa Ya (1)

**CARROLL PALMER**

*General Course*

Non-Com Club (3); Tennis (3, 4, 5); Track  
(1); Orchestra (4); Band (1, 2, 3, 4, 5);  
Pep Band (4, 5); Saxophone Band (3, 4)

**DRUE PERRIN**

*Modern Language Course*

Nissaki Camp Fire (2, 3, 4); Spanish Club  
(3); National Honor Society (4); Girls'  
Class Council (4); Secretary Nissaki Camp  
Fire (2); President Nissaki Camp Fire (4);  
Girls' Council (3)

**MARY PROUDFIT**

*General Course*

Entered from Athena High School, Athena,  
Oregon.

**MARGARET RABE**

*Commercial Course*

Vivantes (4); O. G. A. (4); Vice-President  
O. G. A. (4)

**KATHRYN RICE**

*General Course*





## Seniors

### JAMES RICHMOND

*Scientific Course*

French Club (3, 4); Annual Staff (3); Eh Kah Nam Staff (4); Band (2, 3, 4); Pep Band (3)

### MARY RICHMOND

*General Course*

Gimmel Teth (1, 2, 3, 4); Spanish Club (3, 4); Classical Club (1); Glee Club (1); Vice-President Class (3); Board of Control (3); President Thrift Association (4); El Adren-Gimmel Teth Play (3)

### DANIEL RIEHL

*Commercial Course*

O. G. A. (1, 2, 3)

### VIRGINIA ROBB

*Modern Language Course*

Glee Club (1, 2, 3, 5); Vivantes (4); Classical Club (1, 2)

### RUTH ROBERTSON

*Modern Language Course*

French Club (1, 2); Classical Club (1, 2, 3); Vice-President Classical Club (3); Nissaki Camp Fire (2); Treasurer Nissaki Camp Fire (2); Basketball (1, 2); Baseball (1, 2); Annual Staff (3); Camp Fire Play (2); National Honor Society (4)

### MARIE ROFF

*General Course*

Vivantes (2, 3, 4); Reporter Vivantes (3); Treasurer Vivantes (4)

### CHESTER ROGERS

*General Course*

Band (1, 2, 3)

### STANLEY ROOT

*Scientific Course*

Non-Com Club (3); President Non-Com Club (3); Rifle Team (3); Boys' Class Council (3); Eh Kah Nam Staff (4); Senior Play (4)

### FREDA ROSENBERRY

*Commercial Course*

Athletae (2, 3); Watanopa Camp Fire (2); Secretary Athletae (3); Basketball (2, 3); Baseball (2, 3); Volleyball (2, 3)

### CAROLINE RUOFF

*Classical Course*

Scholarship Awards







## Seniors



**WALTER RYAN**

*Classical Course*

Senate (4); Classical Club (3, 4); Royal Blue Society (3, 4); National Honor Society (4); Vice-President Class (3); President Class (4); Annual Staff (3); Eh Kah Nam Staff (4); Scholarship Awards (1, 2, 3, 4); Judicial Board (3); Board of Control (4); Senior Play (4)

**EDNA SANDERS**

*Modern Language Course*

Nissaki Camp Fire (1, 2, 3, 4); Senior Play (4)

**MARGARET SAXTON**

*Modern Language Course*

El Adrea (3, 4); Girl Reserves (1)

**FRANK SCHAEFER**

*Commercial Course*

Spanish Club (1); Band (1, 2, 3)

**LORRAINE SCHNELLER**

*General Course*

Spanish Club (3); Girl Reserves (1); Nissaki Camp Fire (2, 3, 4); Reporter Nissaki Camp Fire (3); Secretary Spanish Club (3)

**HENRIETTA SCHREIBER**

*Commercial Course*

O. G. A. (4); Vivantes (2, 3, 4)

**LORETTA SCHWANDT**

*Modern Language Course*

Vivantes (4); French Club (3)

**CATHERINE SCHWARZ**

*General Course*

El Adrea (1, 2, 3, 4); Spanish Club (4); Classical Club (1, 2); Art Club (3); Reporter El Adrea (3); Treasurer El Adrea (4); Girls' Council (1)

**MILDRED SHAW**

*Classical Course*

El Adrea (1, 2, 3, 4); Athletae (2, 3, 4); Classical Club (1, 2); Spanish Club (2, 3); Annual Staff (3); National Honor Society (4); Vice-President Athletae (3); Basketball (1, 2, 3); Baseball (1, 2)

**GEORGE SEEBECK**

*Scientific Course*

President Senate (4); Debate (4); Senate (3, 4); Vice-President Senate (4); Rifle Team (3, 4); Classical Club (2, 3, 4); Editor Annual (3); Annual (3, 4); Royal Blue Society (3, 4); Captain R. O. T. C. (4)





## Seniors

### EMMA JEAN SHEFFLER

*General Course*

Entered from Eureka High School, Eureka, Washington

### ETHEL SMITH

*Commercial Course*

Girl Reserves (1); Ac Ca Wa Ya (2); O. G. A. (4); Basketball (1)

### EVELYN SPORLEDER

*Classical Course*

### RUTH STEELE

*General Course*

Tillicum Camp Fire (3, 4); French Club (3, 4); Senior Play (4); Treasurer Tillicum Camp Fire (4); Reporter French Club (4)

### MABEL STEFFEN

*Scientific Course*

French Club (1); Spanish Club (2, 3)

### JEAN STOCKDALE

*Commercial Course*

Athletae (2, 3); Nissaki Camp Fire (1); Vice-President Athletae (3); Basketball (1, 2, 3); Baseball (1, 2, 3); Volleyball (2, 3)

### HOWARD STOCKDALE

*Industrial Course*

### BERNICE STRUTHERS

*Modern Language Course*

Gimmel Teth (1, 2, 3, 4); Athletae (2, 3); Classical Club (1); Art Club (3); Royal Blue Society (3, 4); President Gimmel Teth (3); Vice-President Athletae (2); Secretary Athletae (3); Vice-President Class (1); Vice-President Student Body (4); Baseball (1, 2, 3); Basketball (1, 2, 3, 4); Track (1, 2); Volleyball (1); Eh Kah Nam Staff (4); Annual Staff (3); Annual Queen (4); El Adrea-Gimmel Teth Play (1, 2, 3, 4); Ag Club Play (3); Senior Play (4); National Honor Society (4)

### NICHOLAS SULLIVAN

*Scientific Course*

Spanish Club (3, 4, 5); Officers' Club (4, 5); Non-Com Club (3); Vice-President Officers Club (5); President Non-Com Club (?); Vice-President Non-Com Club (3); Treasurer Spanish Club (3); Boys' Class Council (2); Track (3); Annual Staff (3)

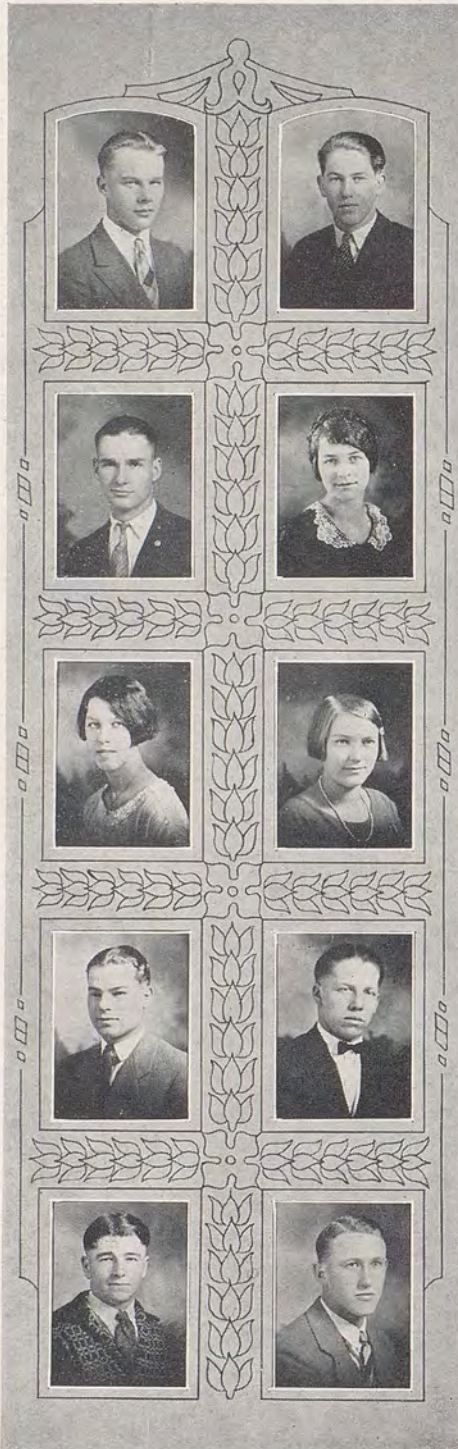
### HOWARD SUMMERS

*Agricultural Course*

Ag. Club (1, 2, 3, 4)







## Seniors

**FRED SUNDQUIST**

*General Course*

Classical Club (1); Officers Club (3, 4); National Honor Society (4).

**LEONARD SUTHERLAND**

*Commercial Course*

**LESLIE TAFT**

*General Course*

French Club (3)

**EMMA THOMAS**

*Scientific Course*

Klahanee Camp Fire (2); Classical Club (3, 4); National Honor Society (4); Reporter National Honor Society (4)

**JESSIE THOMAS**

*Commercial Course*

Spanish Club (3); Watanopa Camp Fire (3, 4); Secretary Watanopa Camp Fire (3); President Watanopa Camp Fire (4)

**PAULINE THOMAS**

*Modern Language Course*

Ayita Camp Fire (3, 4); National Honor Society (4); Athletae (4); Basketball (3, 4); Baseball (3); Volleyball (3)

**ORTHO TIGHE**

*General Course*

Football (2, 3, 4); Track (3, 4); Band (1, 2, 3, 4); Pep Band (2); Orchestra (3)

**RICHARD TIMMONS**

*General Course*

W. W. Club (4, 5); Secretary W. W. Club (5); Judicial Board (4); Football (3, 4, 5); Captain Football Team(5); Basketball(4, 5)

**DEED TOMLINSON**

*Agricultural Course*

Ag Club (1, 2, 3, 4)

**RICHARD TOMPKINS**

*General Course*

Basketball (4, 5); Pep Band (2, 3, 4)





## Seniors

### MARIAN TORKELSON

*Classical Course*

Classical Club (3, 4); Klahanee Camp Fire 1, 2, 3, 4); Secretary Classical Club (3); Treasurer Klahanee Camp Fire (4); President Klahanee Camp Fire (3, 4); National Honor Society (4)

### WALTER TRAVAILLE

*Agricultural Course*

### DENISE TRIPPEER

*Scientific Course*

Classical Club (1, 2, 3); French Club (3); Gimmel Teth (1, 2, 3, 4); Secretary Gimmel Teth (4); Secretary Class (2); Reporter Class

### MELVIN TROYER

*Modern Language Course*

Classical Club (1); Band (4); Saxophone Band (3)

### LILLIAN WALKER

*General Course*

El Adrea (4); Spanish Club (4)

### JEAN WALTON

*Scientific Course*

French Club (3, 4); National Honor Society (4); Treasurer French Club (4); President National Honor Society (4)

### ALLEN WALTON

*Scientific Course*

National Honor Society (4); Secretary National Honor Society (4); Senior Play (4); Non-Com Club (4)

### MARJORIE WELLMAN

*Modern Language Course*

Ayita Camp Fire (2, 3, 4); Classical Club (1); Spanish Club (3); National Honor Society (4); Secretary Ayita Camp Fire (2, 3); Reporter Ayita Camp Fire (4); Girls' Class Council (3)

### GOLDIE WHETSEL

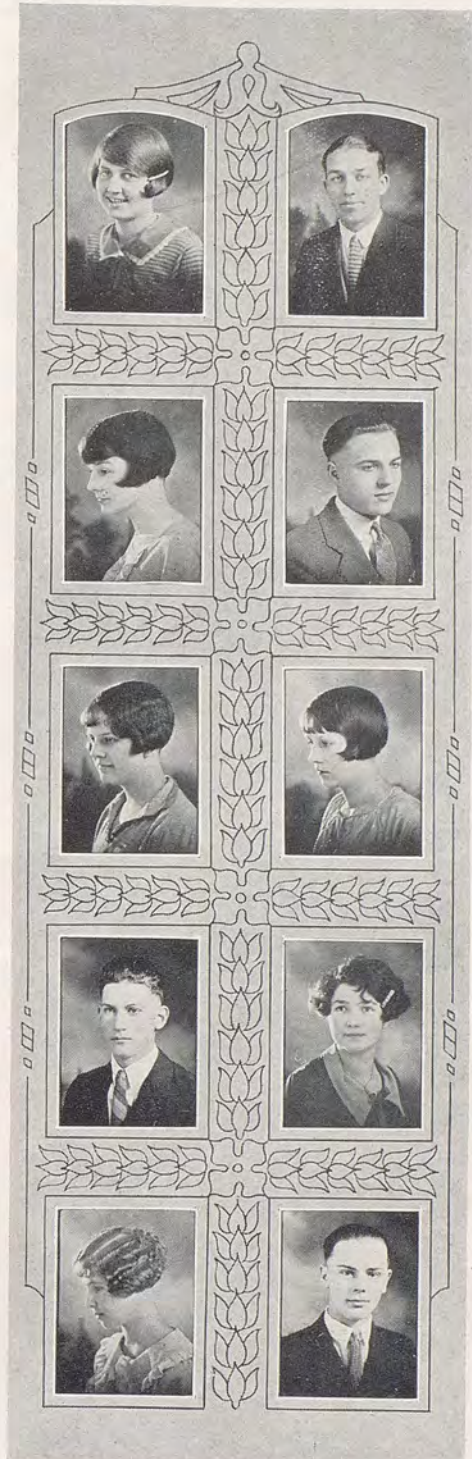
*General Course*

Nissaki Camp Fire (2, 3, 4); Spanish Club (2, 3); Glee Club (1); Basketball (1); Baseball (1)

### GLENN WHITNEY

*Modern Language Course*

Classical Club (4); Spanish Club (3, 4); Pep Band (3, 4); Eh Kah Nam Staff (4); Band (1, 2, 3, 4); Orchestra (3, 4)







## Seniors



VERNA WHITING

*General Course*

Klahanee Camp Fire (2, 3, 4)

LAVELLE WILSON

*Scientific Course*

Classical Club (1, 2); Spanish Club (3); Gimmel Teth (1, 2, 3, 4); Secretary Classical Club (2); Vice-President Gimmel Teth (4); Vice-President Spanish Club (3); Reporter Class (1); Girls' Class Council (2); Vice-President Class (4); Judicial Board (3, 4); Secretary Student Body (4); Board of Control (4); Eh Kah Nam Staff (4); Annual Staff (3); El Adrea - Gimmel Teth Play (4)

VELDA WILSON

*Commercial Course*

MAYME WILSON

*General Course*

Nissaki Camp Fire (1, 2, 3, 4); Spanish Club (2, 3, 4); Girls' Class Council (1); President Girls' Council (4); Vice-President Girls' Council (3)

ZELIA WITT

*General Course*

Klahanee Camp Fire (2, 3, 4)

HAROLD WILKEN

*Commercial Course*

MARIAN WOLF

*Commercial Course*

Ayita Camp Fire (2, 3, 4); Ac Ca Wa Ya (2); Girl Reserves (1); Glee Club (1, 2); Secretary Girl Reserves (1); President Ayita Camp Fire (2, 3, 4)

ALLEN YEEND

*General Course*

ELVIRA YOUNG

*Classical Course*

Classical Club (1, 2, 3, 4); National Honor Society (4); Gimmel Teth (4); Secretary Classical Club (4); Secretary National Honor Society (4); Treasurer Class (4); Judicial Board (4); Eh Kah Nam Staff (4); Saxophone Band (3); Sponsor R. O. T. C. (3, 4)

DORA YOUNG

*Modern Language Course*

Glee Club (1, 2); French Club (3, 4)





## Seniors

**SUZANNE BROWN**

*Commercial Course*

Nissaki Camp Fire (2, 3, 4); Vice-President Nissaki Camp Fire (3)

**DOROTHY HARBERT**

*Modern Language Course*

**MARCELLA ROGERS**

*Commercial Course*

**FRANK STEWART**

*Commercial Course*

**ROBERT WOODS**

*Classical Course*

Classical Club (2, 3); Band (1, 2, 3, 4); Senate (3); Non-Com Club (3); Secretary Senate (3)

**VIOLA YENNEY**

*General Course*

Vivantes (2, 3); Spanish Club (2, 3, 4); Secretary Vivantes (2); Treasurer Spanish Club (3)

**ALEXANDER WEBER**

*Commercial Course*

Non-Com Club (2, 3); Basketball (3, 4)

**ZYLPH COURNYER**

*Modern Language Course*

Gimmel Teth (1, 2, 3, 4); Ac Ca Wa Ya (1); Vice-President Gimmel Teth (3); President Classical Club (2); Annual Staff (3); Senior Play (4)

**MARTHA MOORE—Mid-Year Graduate**

*General Course*

El Adrea (1, 2, 3, 4); President El Adrea (3); Secretary El Adrea (4); French Club (3, 4); Classical Club (1, 2); Sponsor R. O. T. C. (3, 4); El Adrea-Gimmel Teth Play

**MARZELLA JULIUS**

*Modern Language Course*

French Club (3, 4); Glee Club (1, 2)

*Seniors whose pictures came in too late to classify, see page 148.*

*Seniors whose pictures were unobtainable:*

Albert Bachtold, Joseph Buttice, Lynn Croxdale, Frances Drake, Emery Goodman, Cedric Googins, William Harras, Albert Heibigner, Robert Horsley, John Kremer, Rowland LeRoux, Virgil Perry, Eugene Stiller.







Ryan

Wilson

Ginn

Young

### Senior Officers

*First Semester*

Walter Ryan ..... *President*.....

Lavelle Wilson ..... *Vice-President*.....

Richard Ginn ..... *Secretary*.....

Elvira Young ..... *Treasurer*.....

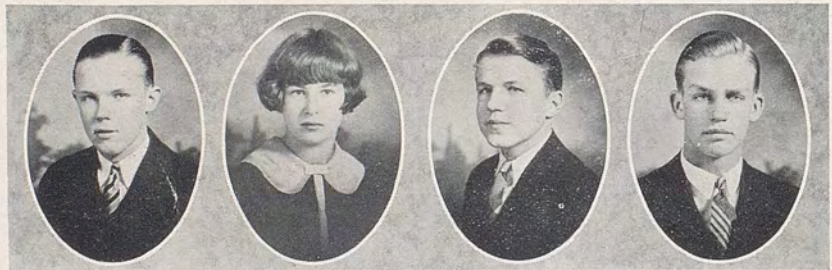
*Second Semester*

Walter Ryan

Clare Applegate

Richard Ginn

Frank Stewart



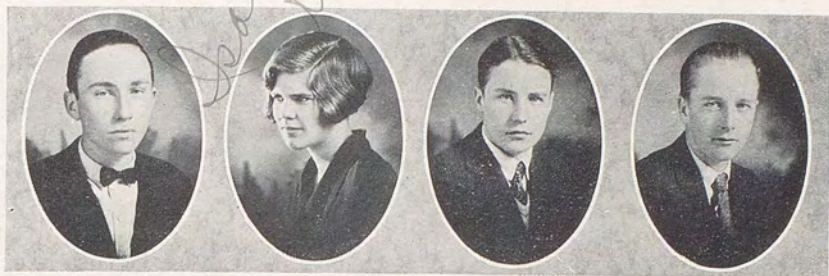
Ryan

Applegate

Ginn

Stewart





Kennedy

Kane

Clodius

Aldrich

### Junior Officers

*First Semester*

Melvin Kennedy ..... *President*

Isabel Kane..... *Vice-President*

Henry Clodius..... *Secretary*

Percy Aldrich ..... *Treasurer*

*Second Semester*

Melvin Kennedy

Leo Carde

Frances Clark

Percy Aldrich



Kennedy

Carde

Clark

Aldrich





Agnew  
Aldrich  
Applegate  
Auker  
Bachtold  
Bailey

Baker  
Baker  
Barclay  
Bare  
Bates  
Beabes

Becker  
Bennett  
Bensel  
Brannin  
Brixey  
Brown, H.

Brown, T  
Burroughs  
Carter  
Casey  
Castle  
Chadsey

Chase  
Church  
Clark  
Clodius  
Coldiron  
Collard

Colt  
Compson  
Crawford  
Creek  
Cunningham  
Demaris





Demory  
Doolin  
Dormaier  
Dyer  
Elkinton  
Fagely

Fausti  
Fields  
Fix  
Fletcher  
Frank  
French

Gardner  
Garner  
Geist  
German  
Gilman  
Good

Graybill  
Gruber  
Hand  
Harbert  
Hassler  
Hiester

Hiller  
Hoon  
Hinshaw  
Hoovel  
Hunt, Helen  
Hunt, Hester

Iverson  
Jackson  
Janosky  
Jensen  
Kane  
Kasemeyer





Johnson  
Kaseburg  
Kay  
Keiser  
King  
Kirk

Kelly  
Kendall  
Kennedy  
Krainig  
Krumbah  
Laun

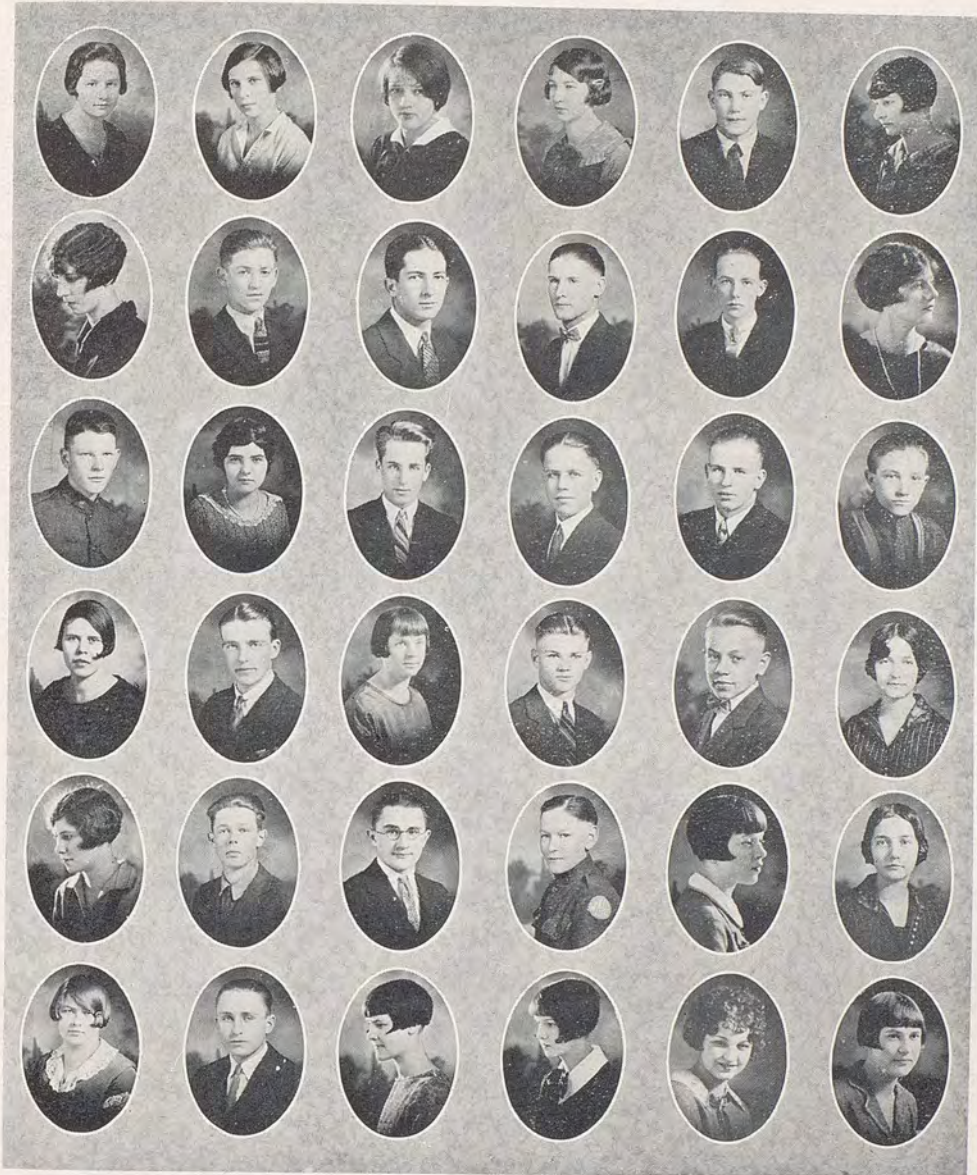
Lehrer  
Lofthus  
Loney  
Lott  
Mackin  
Mann

Marcy  
Martin  
McCauly  
McColm  
McFarland  
McGowan

McLean  
Miller  
Monroe  
Moore  
Morris  
Nalder

Newbill  
Neumeier, M.  
Neumeier, G.  
Noland  
Oberholtzer  
O'Rourke





Osterman  
Oswald  
Owens  
Page, M.  
Page, F.  
Peterson

Potter  
Ramp  
Ramseur  
Ransom  
Redfield  
Reed

Reel  
Roberts  
Roeder  
Sanders  
Schiffman  
Seitz

Shelton  
Shelton  
Sherman, S.  
Sherman, R.  
Shore  
Silkforth

Smith, Wm.  
Smith, H.  
Sprout  
Speer  
Speer  
Staley

Stanton  
Stewart  
Stiller  
Stirton,  
Stirton, Mary  
Teal





*Gordon  
Thompson*

*Handwritten note in the middle row, second column.*

Thompson	Van Winkle	West	Witschge	Yake	Young, E.
Thompson	Waggoner	Wegge	Wheeler	Yenney	Paul
Tighe	Wallis	Withes	Wolfe	Yenney	Skirving
Venere	Watson	Wilhelm	Woodhall	Young	Garvey
Adams		Weaver	Wiseman	Woods	Young, C.

*Juniors whose pictures were unobtainable:*

- |              |              |             |               |              |
|--------------|--------------|-------------|---------------|--------------|
| Banks, H.    | Davin, A.    | Gauch, F.   | Miller, C.    | Rourke, B.   |
| Bayer, A.    | DeMoss, L.   | Hall, W.    | Noland, R.    | Saunders, C. |
| Bingaman, V. | Donovan, D.  | Hand, J.    | Patterson, L. | Sheldon, E.  |
| Blair, W.    | Ebding, H.   | Harvey, C.  | Phillips, W.  | Stoller, H.  |
| Bogle, D.    | Eng, S.      | Hobkirk, R. | Patter, M.    | Wills, T.    |
| Carde, L.    | Ferguson, W. | Kent, A.    | Raugust, W.   | Young, M.    |
| Collier, F.  | Gardner, T.  | McLeod, K.  | Robberson A.  |              |





Sophomores



Thorp  
Alden  
Alexander  
Allesio  
Anhorn  
Allison  
Applegate

Atkin  
Bains  
Baker  
Ball  
Bayles  
Bayne  
Beach

Bell  
Bergevin  
Berreman  
Born  
Boylan  
Brown  
Brown

Bruce  
Bryson  
Burke  
Buroker  
Callow  
Carey  
Carley

Carter  
Cassatt  
Chandler  
Clark  
Cobb  
Coble  
Cogswell

Cook  
Corkrum  
Cox  
Crabbe  
Craig  
Crider  
Curcio





*Evelyn Davidson*



Danes	Duncan	Eyraud	Garriott	Gross	Helm
Davidson	Dunn	Falkener	Gemmel	Hall	Hill
Davis, L.	Durand	Fields	Gibson	Hall	Hill
Davis, R.	Dysart	Fisher	Glasspool	Hartsock	Hobkirk
Demaris	Eichenberger	Fogarty	Goodman	Goodwin	Hopkins
Dorrance	Elkinton	Franks	Gorman	Healy	Hoyt
Dubbe	Eubanks	Galloway	Harper	Heisler	Hunt





Hunt  
Hutsell  
Huntington  
Irwin  
Jantzen  
Jussaud  
Jensen

Johnson  
Jones  
Kain  
Kirk  
Knight  
Lammers  
Lang

Largent  
Lathrop  
Lester  
Lewis  
Long  
Lusk  
Luchte

Lutz  
Mann  
Marey  
Mathieson  
May  
McAdams  
McDougal

McFarland  
McGhee  
McIntosh  
McLaughlin  
McMurdo  
Meiners  
Melby

Melosh  
Miller  
Mooney  
Morgan  
Mulhair  
Nelson  
Ogle





Nelson  
O'Hair  
Ormsby  
Parsons  
Quinn  
Pember, A.  
Pember, E.

Plaquet  
Rasmus  
Perry  
Ramsbeck  
Reece  
Reiswig  
Rice, E.

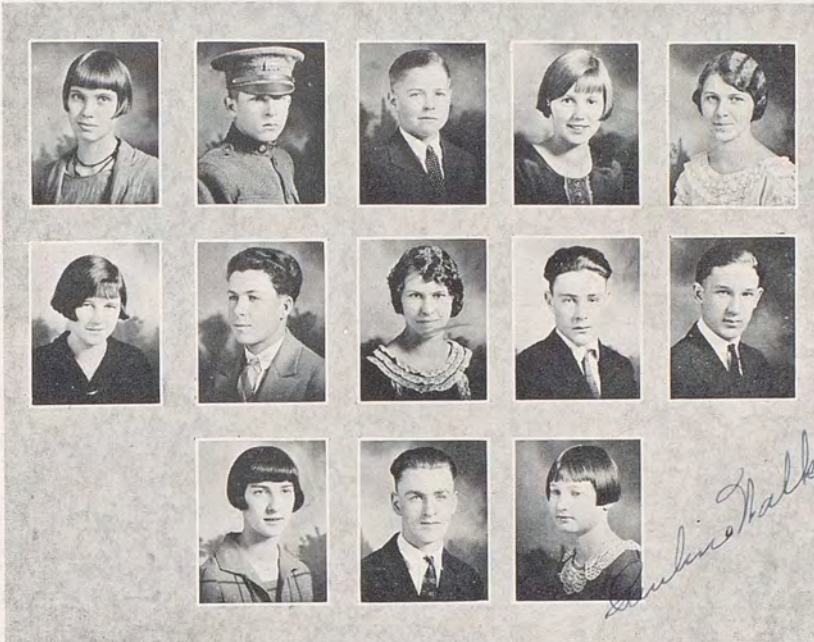
Rice, N.  
Rice  
Richmond  
Rieker  
Rogers  
Saunders  
Sanders

Shields  
Shontz  
Schiffman  
Simons  
Simons  
Smith  
Tellier

VanVranken  
Stanton  
Stanton  
Spencer  
Stubblefield  
Tetherow  
Thomas

Thomas  
Thomas  
Tomlinson  
Trowbridge  
Tuttle  
Upton  
Van Hollebeke





Van Horn  
Woolcut

Wills  
Watson  
Wentsch

West  
Williams  
Willoughby

Woodhall  
Yager  
Walker

Zanow  
Witt

*Walker*

*Sophomores whose pictures were unobtainable:*

- |                |                |              |                |                  |
|----------------|----------------|--------------|----------------|------------------|
| Bierwagen, G.  | Davis, T.      | Harding, G.  | McKinney, W.   | Sherman, B.      |
| Bramhall, C.   | Denny, B.      | Harris, A.   | Miller, L.     | Shuham, E.       |
| Broome, M.     | Doering, E.    | Hart, H.     | Montgomery, P. | Simons, H.       |
| Brower, C.     | Dunnigan, T.   | Hawkins, K.  | Moore, M.      | Sporleder, E.    |
| Burroughs, Wm. | Fanning, J.    | Holland, W.  | Morrison, G.   | Staudenmaier, D. |
| Butherus, H.   | Fields, W.     | Hunt, T.     | Murray, E.     | Taylor, R.       |
| Calvert, E.    | Fitzgerald, R. | Hurst, H.    | Owsley, R.     | Timmons, H.      |
| Casteel, L.    | Fix, A.        | Jobe, B.     | Richmond, E.   | Turner, D.       |
| Chase, J.      | Fritzler, H.   | Johnston, E. | Rizzuti, D.    | Underwood, V.    |
| Colwell, C.    | Funk, A.       | Karr, M.     | Robertson, E.  | Wittrock, I.     |
| Converse, G.   | Ginn, C.       | Leuthy, M.   | Robertson, K.  | Wilken, W.       |
| Coyle, B.      | Gluck, O.      | Loewe, D.    | Rosenberry, H. | Williams, C.     |
| Crowe, E.      | Graebener, E.  | Mayo, C.     | Schoessler, T. | Wright, R.       |
| Davis, E.      | Hand, E.       | McCrow, B.   | Schrieber, R.  | Zuger, C.        |
|                |                | McKay, H.    | Shultz, M.     |                  |





Ball

Lester

Fisher

Mann

### Sophomore Officers

*First Semester*

*Second Semester*

Walter Ball .....	<i>President</i> .....	Walter Ball
Edna Lester.....	<i>Vice-President</i> .....	Dorothy McGhee
Frances Fisher.....	<i>Secretary</i> .....	Margaret Hill
Weimar Mann.....	<i>Treasurer</i> .....	Alice Craig



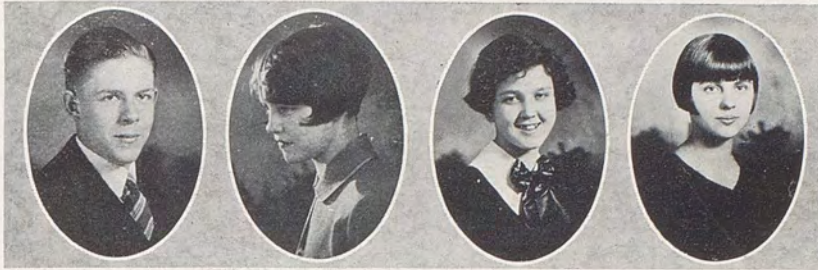
Ball

McGhee

Hill

Craig





Hill

Holland

Hill

Pullen

### Freshman Officers

*First Semester*

Duane Hill .....	<i>President</i> .....	Duane Hill
Virginia Holland .....	<i>Vice-President</i> .....	Ruth Fulton
Mildred Hill .....	<i>Secretary</i> .....	Mildred Hill
Dorothy Pullen .....	<i>Treasurer</i> .....	Dorothy Pullen

*Second Semester*



Hill

Fulton

Hill

Pullen





Class of '29







Class of 1919



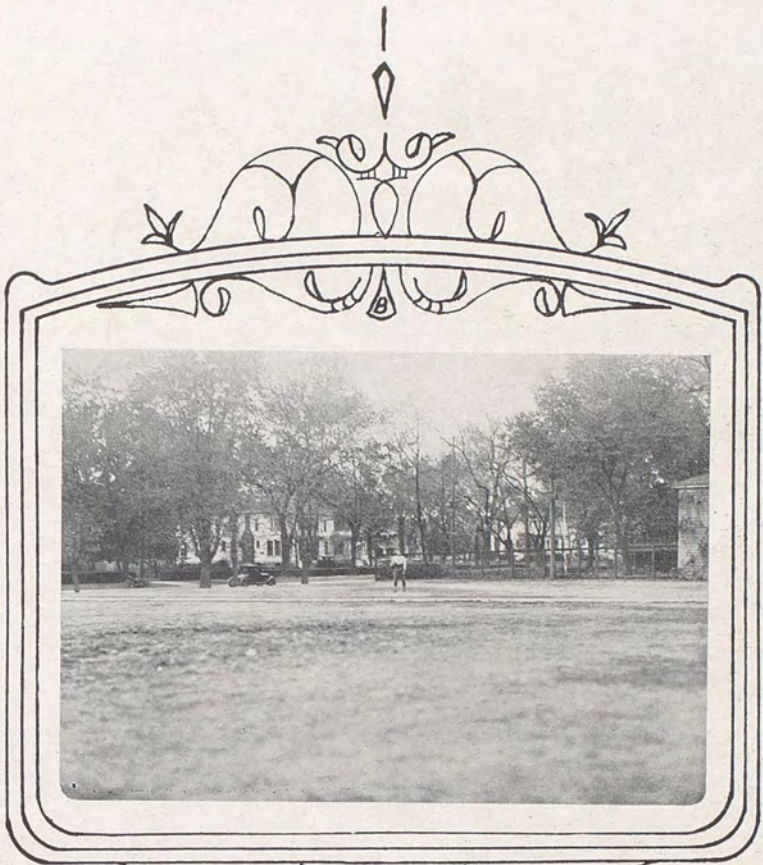




67-10 BRID



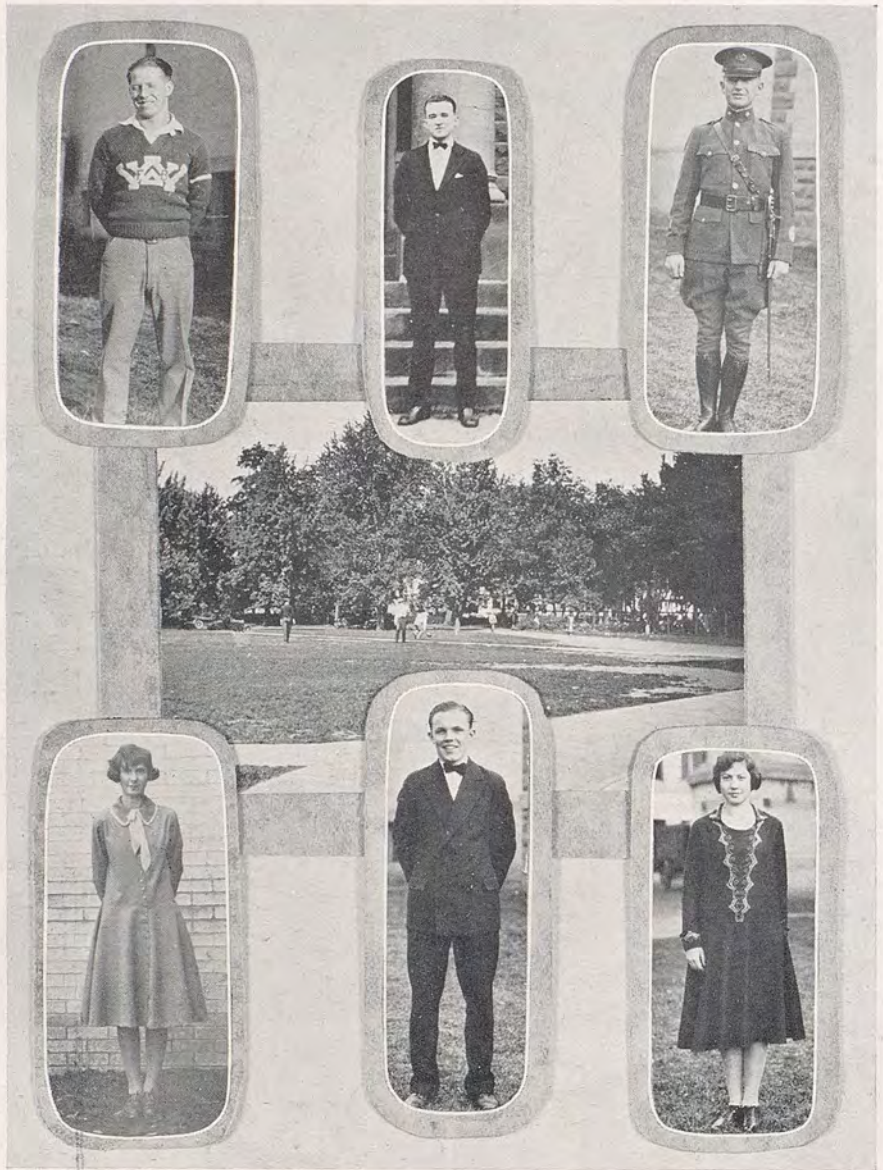




Features of Wa-Hi

i





WA-HI STUDENT LEADERS

*Athletics*—TIMMONS

*Military*—LANE

*Student Affairs*—LEROUX

*Scholarship*—RYAN

*Athletics*—HOON

*Organizations*—OSTERMAN



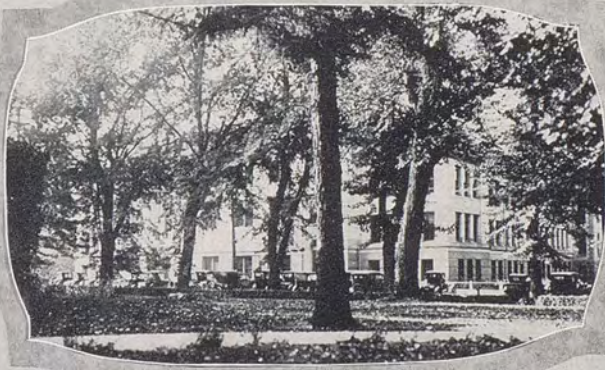
The Royal

Blue



W  
a

H  
i





The Royal

Blue



Clark Medalist—JAMES BENSON

*Who was chosen by popular vote of his fellow students of Wa-Hi because in their estimation he has been the best citizen of the school during his four years.*





Annual Queen—BERNICE STRUTHERS

*Who was elected unanimously by the entire student body of Walla Walla High School as the girl who has done more than any other girl for the welfare of Wa-Hi during her four years in school.*





Senior Day



Voting



Eh Kah Nam Office



Annuals Out



Initiation



Classical Club Breakfast



May Day

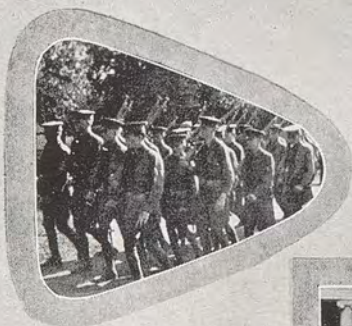


Initiation



The Royal

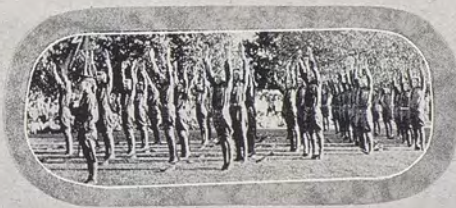
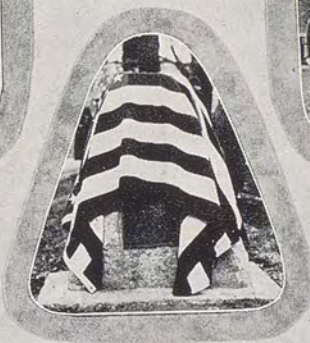
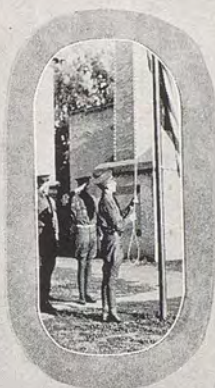
Blue



Ma Hi



R.O.C.







A  
g  
r  
i  
c  
u  
l  
t  
u  
r  
e







Organizations





## Board of Control

Francis LeRoux .....	President Associated Student Body
Bernice Struthers .....	Vice-President Associated Student Body
Dale Lane .....	Secretary Associated Student Body
Lavelle Wilson .....	Appointed to Fill for Dale Lane
Virgil Davin .....	Student Representative
Stirlin Applegate .....	Student Representative
Ruth Osterman .....	Student Representative
Ruth Baker .....	Student Representative
Walter Ryan .....	President Senior Class
Melvin Kennedy .....	President Junior Class
Walter Ball .....	President Sophomore Class
Duane Hill .....	President Freshman Class

## Judicial Staff

Myrtle Burdick .....	Appointed to fill for Iris Hoon
Allen Walton .....	Appointed to fill for Stan Atkin
Lucyreta MacMartin .....	Student Representative
Paine Paul .....	Student Representative
Robert Church .....	Student Representative
Elvira Young .....	Student Representative
Clare Applegate .....	Vice-President Senior Class
Isabel Kane .....	Vice-President Junior Class
Leo Carde .....	Vice-President Junior Class
Edna Lester .....	Vice-President Sophomore Class
Dorothy McGhee .....	Vice-President Sophomore Class
Virginia Holland .....	Vice-President Freshman Class
Ruth Fulton .....	Vice-President Freshman Class

*Advisor—MR. B. A. TACK*

## Student Government

The Judicial staff of 1925-26 has had a very successful year. Every judicial board for the past nine years has done something to improve student government, and the present staff is no exception. It has caused the interest of the student body at large to center on student government. Realizing what popular interest meant to the school, the board has encouraged poster contests, tag contests, and various other contests in the interest of student government. A new system of accuracy and speed in handling cases has also been developed.

Much of the success of this year is due to Mr. Tack, the advisor of the Judicial Board. He has been instrumental in the development of the new system and has given his kind assistance at all times. The Judicial Staff is glad to take this opportunity to thank Mr. Tack.





Applegate

Lane  
Baker

Ryan

Ball

LeRoux  
Osterman  
Mr. Tack

Kennedy

Hill  
Struthers

Davin





## Girls' Council

### Officers

#### *First Semester*

Mayme Wilson.....	<i>President</i> .....	Hazel Gross
Bernice Becker .....	<i>Vice-President</i> .....	Bernice Becker
Thelma Hutsell.....	<i>Secretary</i> .....	Freda Rosenberry
Florence Hinshaw.....	<i>Assistant Secretary</i> .....	Thelma Hutsell!
Dorothy McGhee.....	<i>Guard</i> .....	Florence Hinshaw

#### *Second Semester*

### Membership Roll

#### *First Semester—*

Bernice Becker  
 Elizabeth Croxdale  
 Karen Falkenberg  
 Florence Hinshaw  
 Virginia Hundley  
 Thelma Hutsell  
 Dorothy McGhee  
 Nellie Rice  
 Josephine Wiseman  
 Mayme Wilson

#### *Second Semester—*

Bernice Becker  
 Vivian Cochran  
 Virginia Fitzpatrick  
 Charlotte Ginn  
 Beth Gorman  
 Hazel Gross  
 Florence Hinshaw  
 Virginia Hundley  
 Thelma Hutsell  
 Freda Rosenberry

*Advisor—MISS RUTH WENSTROM*

The purpose of the Girls' Council is to promote simplicity, modesty, good taste, and inexpensive clothing.

With this sole purpose in mind the members of the Council have tried to deal fairly with one and all during the year 1925-1926. The Council has been greatly aided by the capable assistance of Miss Wenstrom, its advisor.

This year a girls' federation was organized. It is the second such organization in Wa-Hi. The Council hopes that the Federation will develop into a very important part of Wa-Hi.





Wiseman  
Rice  
Hundley

Falkenberg  
Wilson  
Miss Wenstrom  
McGhee

Becker  
Hutsell  
Hinshaw





## Eh Kah Nam

Editor-in-Chief .....	Lorraine LeRoux
Associate Editor .....	Patricia Kane
Literary Editor .....	Hazel Gross
Art Editor .....	Ruth Osterman
Assistant Art Editors .....	Delvin Sickler, Dorothy Crawford
Alumni .....	Virginia Hundley
Athletics .....	Charles Johnson
Society .....	Lavelle Wilson
Music .....	Glen Whitney
School Notes .....	Walter Ryan, Elvira Young, Paine Paul
Circulation .....	James Richmond, Stan Atkin
Exchanges .....	William Johnson
Military .....	Richard Ginn
Jokes .....	Winifred Dunphy

### Business Staff

Business Manager .....	Allen Crocker
Assistant Business Managers .....	Stanley Root, Bernice Struthers
Typists .....	Joe Locati, Martha Blahm, Dorothy Fluallen
Advisor .....	Miss Gertrude Maxwell

The Eh Kah Nam, the literary magazine of Wa-Hi, is published five times during the school year by members of the Senior Class. Beside the literary contributions of merit contributed by various writers in the school, the magazine carries accounts of all occurrences in school life.

The Eh Kah Nam is invaluable to members of the student body because of the indomitable spirit of Wa-Hi which it maintains through the school and spreads to the town and to many parts of the state and nation by the exchanges which are sent all over the United States and to Alaska and England.

With the aid of some broad-minded business men of our city, coupled with the excellent assistance and advice of Miss Maxwell, the advisor, the publication has been a success. Mr. Ove, of the Bulletin staff, has also given us many wise suggestions. We cannot overlook the cooperation of the student body which has given us its loyal support, and we include it in the list of our patrons to whom we owe our gratitude and thanks.





Blahm

Paul

Osterman

Crawford

Fluallen

Whitney

Struthers

Ginn

Crocker

Hundley

Kane

Kirkman

LeRoux

Root

Young

Locati

Johnson

Wilson

Gross

Dunphy





## Annual Staff

David Lehrer .....	Editor-in Chief
Bernice Becker .....	Literary Editor
Eugene King .....	Business Manager
Myrtle Burdick .....	Campaign Manager
Gordon McLean, James Morris.....	Circulation
Mary Garner.....	Appointment Secretary
Josephine Wiseman .....	Assistant
Purdy Cornelison, Frances Clark .....	Photographers
Betty Osterman, Rex Monroe, Jacqueline Fagely.....	Organizations
Earl Gilman, Iris Hoon, Stirlen Applegate .....	Athletic Editors
Albert Gruber .....	Military
Jacqueline Fagely .....	Stage and Platform
Virginia Thompson .....	Music
Florence Hinshaw, Ned Ransom.....	Joke Editors
Mary German .....	Calendar
Grace Crawford .....	Stenographer
Helen May, Zola McDougal, Bethel Goodman, Elizabeth Shuham, Edna Lester, Beth Gorman.....	Sophomore Assistants
George Seebeck .....	Senior Advisor
Miss Laura Boucher.....	Faculty Advisor

Each year the Royal Blue Staff endeavors to complete an annual, a representation of school life, which will surpass all previous volumes in accuracy, completeness, and perfection of workmanship.

The book last year was sent to the National Contest in Wisconsin, sponsored by the Central International Press Association. This year, the staff, taking advantage of the constructive criticism offered by the judges in the contest, has completed a book which surpasses the annual of last year, and which, it is hoped, will win a much higher place in the national contest.

This year it was decided that it would be wise to bring in Sophomore assistance and train them for the Annual work of their junior year. Accordingly, about eight Sophomores are serving as assistants on the staff. Everyone hopes that the Royal Blue of 1927 will be better for this movement.

Another new step in Annual work was taken last year when the Royal Blue became a student body publication rather than a Junior class publication. It was specified, however, that the staff should be comprised of Juniors, and that the Annual should have its own independent financial accounts.

The staff realizes that an annual is a representation of the school that is unchanged and undimmed by the years—that it must be and is a true record of the year that it represents. Therefore, the staff has done its utmost to attain that end.





Ransom	Osterman	McLean	Applegate	Hinshaw
Morris	Becker	Hoon	Garner	Gruber
Fagely	King	Lehrer	Seebeck	Burdick
Gilman	Crawford	Miss Boucher	Thompson	Monroe
German		Cornelison	Clark	





## Senate

### Officers

<i>First Semester</i>		<i>Second Semester</i>
George Seebeck.....	<i>President</i> .....	David Mann
Sam Warren.....	<i>Vice-President</i> .....	Duane Hill
Gordon McLean.....	<i>Secretary-Treasurer</i> .....	Kenneth Lofthus
Paine Paul.....	<i>Reporter</i> .....	Eugene King

### Membership Roll

Stirlen Applegate  
 Walter Ball  
 Robert Church  
 Allen Crocker  
 Hershel Hadley  
 Duane Hill  
 John Kelly  
 Eugene King  
 Jack Kirkman  
 David Lehrer

Robert Lenfesty  
 Kenneth Lofthus  
 David Mann  
 Gordon McLean  
 Paine Paul  
 Ned Ransom  
 Walter Ryan  
 George Seebeck  
 Robert Sherman  
 Sam Warren

*Advisor*—MR. RUSH JORDAN

The Senate is one of the oldest clubs in the Walla Walla High School. It was organized eleven years ago by active members of the student body who received a charter for it. The purpose was to establish an organization which would promote debate and take an active part in school affairs.

During the past year the Senate has fulfilled all of its aims by taking an active part in debate, student body affairs, and upholding its social standard in the school. The Senate was given the privilege of managing the school debates which, with the support of its members and with the aid of Mr. Jordan, were handled very efficiently.

Unusual activity was shown by this club in all branches of school work. This year several new members were added to the club who were representative of the various groups of the student body.

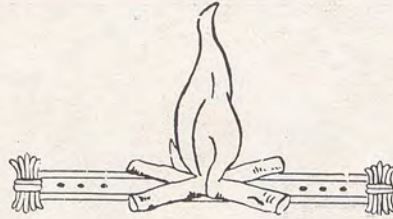
The members wish to take this opportunity to express their appreciation of the time Mr. Rush Jordan, the advisor of the Senate, has taken to advise and strengthen this club.





Crocker	King	Lofthus	Lehrer
Church	Kelly	McLean	Applegate
Ball	Paul	Seebeck	Warren
Kirkman	Hill	Hadley	Ransom
	Lenfesty	Mr. Jordan	Sherman
			Mann





## Tillicum Camp Fire

### Officers

*First Semester*

Betty Osterman  
Leah Lester  
Jaqueline Fagely  
Ruth Steele  
Edna Lester

*President*  
*Vice-President*  
*Secretary*  
*Treasurer*  
*Reporter*

*Second Semester*

Betty Osterman  
Leah Lester  
Jaqueline Fagely  
Ruth Steele  
Edna Lester

### Membership Roll

Blanche Bryson  
Jacqueline Fagely  
Frances Fisher  
Marian Fisher  
Ruth Fulton  
June Gemmell  
Mildred Hill  
Virginia Holland  
Helen Huntington  
Hortense Kay

Edna Lester  
Leah Lester  
Dorothy McGhee  
Betty Osterman  
Margaret Page  
Gwendolyn Ramseur  
Lucy Ransom  
Elizabeth Shuham  
Grace Steele  
Ruth Steele

*Advisor*—MISS KATHERINE H. BLYNN

Wohelo, the watchword of the Camp Fire Girls, is composed of the first two letters of the words "work", "health", and "love". Tillicum girls strive to follow this ideal. Tillicum has also tried to make its members good Wa-Hi students and better American citizens. The semester average of 88.8 per cent and the winning of the Faculty Scholarship Cup shows the scholarship attainments of the twenty Tillicum girls. Tillicum citizenship and helpfulness was demonstrated at Christmas time when the group provided for a needy family of twelve members and made the season pleasant with Christmas carols.

The group is glad to take this opportunity to thank Miss Katherine Blynn for the faithful service she has given. The girls feel that their success is due to her unflinching interest.





*Blanche Bryson '28*

*Journal Fisher*

*Jane Gemmell*

	E. Lester	Bryson	F. Fisher	
R. Steele	McGhee	Fagely	L. Lester	Ransom
Hill	Fulton	Osterman	G. Steele	Gemmell
Kay	Shuham	Holland	Ramseur	M. Fisher
	Huntington	Miss Blynn	Page	





## Gimmel Teth

### Officers

<i>First Semester</i>		<i>Second Semester</i>
Mary Richmond .....	<i>President</i> .....	Mary Richmond
Geneva Dyer .....	<i>Vice-President</i> .....	Geneva Dyer
Denise Trippeer .....	<i>Secretary</i> .....	Denise Trippeer
Isabel Kane .....	<i>Treasurer</i> .....	Isabel Kane
Ruth Baker .....	<i>Reporter</i> .....	Ruth Baker

### Membership Roll

Helen Anderson	Maxine Culley	Isabel Kane	Dorothy Pullen
Frances Ankeny	Ruth Cunningham	Lorraine LeRoux	Mary Richmond
Claire Applegate	Winifred Dunphy	Mildred Mann	Arlene Robberson
Maxine Atkins	Geneva Dyer	Marjorie Martin	Bernice Struthers
Ruth Baker	Ruth Garvey	Lucyreta MacMartin	Denise Trippeer
Callie Bruce	Margaret Hill	Peggy McIntosh	Lavelle Wilson
Myrtle Burdick	Iris Hoon	Juliet Moore	Elvira Young
Clarise Conklin	Patricia Kane	Ruth Osterman	Marian Woods
Zylph Courmyer			

*Advisor*—MISS FAY HAMM

Gimmel Teth has been one of the leading societies since clubs first existed in Wa-Hi, and throughout every school year it has done its best to better not only its members but also the entire school.

The aim of the club is to promote the spirit of friendship, cooperation, school loyalty, and scholarship among its members. It sets a high standard of grades as a requirement for club membership; it supports all school activities and backs the teams whether they are victorious or not.

The girls' interest in the club is held by the instructive and enjoyable educational meetings which are held each month.

Perhaps the outstanding public feature of the club's activities for the year was its presentation of the three one-act plays, "The Minuet", "The Florist Shop," and "In the Spring a Young Man's Fancy", which were given jointly by the Gimmel Teths and El Adreas.

Owing to the helpful influence of their advisor, Miss Fay Hamm, the girls feel that during the year 1925-1926 they have come nearer than ever to attaining the ideal of their aims.





Ankeny	Cunningham	Bruce	Anderson	Applegate	Pullen	Young
	Wilson	Osterman	Dyer	I. Kane	Cournyer	
	Struthers	Baker	Richmond	Trippeer	LeRoux	
Martin	Dunphy	Garvey	Miss Hamm	Moore	Atkins	MacMartin
	Burdick	Hill	P. Kane	Conklin	Culley	
Mann			McIntosh			Hoon





## El Adrea

### Officers

#### First Semester

Elsie Harvey ..... *President*  
 Verna Lutz..... *Vice-President*  
 Martha Moore..... *Secretary*  
 Catherine Schwarz ..... *Treasurer*  
 Thelma Hutsell ..... *Reporter*

#### Second Semester

Elsie Harvey  
 Thelma Hutsell  
 Calverna Yenney  
 Catherine Schwarz  
 Thelma Hutsell

### Membership Roll

Marie Agnew  
 Lavinia Alexander  
 Esther Armstrong  
 Nettie Berreman  
 Martha Boston  
 Frances Burroughs  
 Hazel Cassatt  
 Frances Clark  
 Elizabeth Croxdale  
 Esther Engelhardt  
 Beth Gorman  
 Gertrude Hanger  
 Elsie Harvey

Florence Hinshaw  
 Alice Hinshaw  
 Peggy Holdereid  
 Isabelle Humphreys  
 Helen Hutsell  
 Thelma Hutsell  
 Lillian Lowden  
 Sarah Leonard  
 Verna Lutz  
 Martha Moore  
 Anna Jean Pember  
 Emma Pember

Mary Louise Ramsbeck  
 Ella Rooks  
 Ruth Robertson  
 Bernadine Rourke  
 Margaret Saxton  
 Catherine Schwarz  
 Mildred Shaw  
 Helen Stubblefield  
 Lilah Speer  
 Lillian Walker  
 Marybelle Walters  
 Calverna Yenney

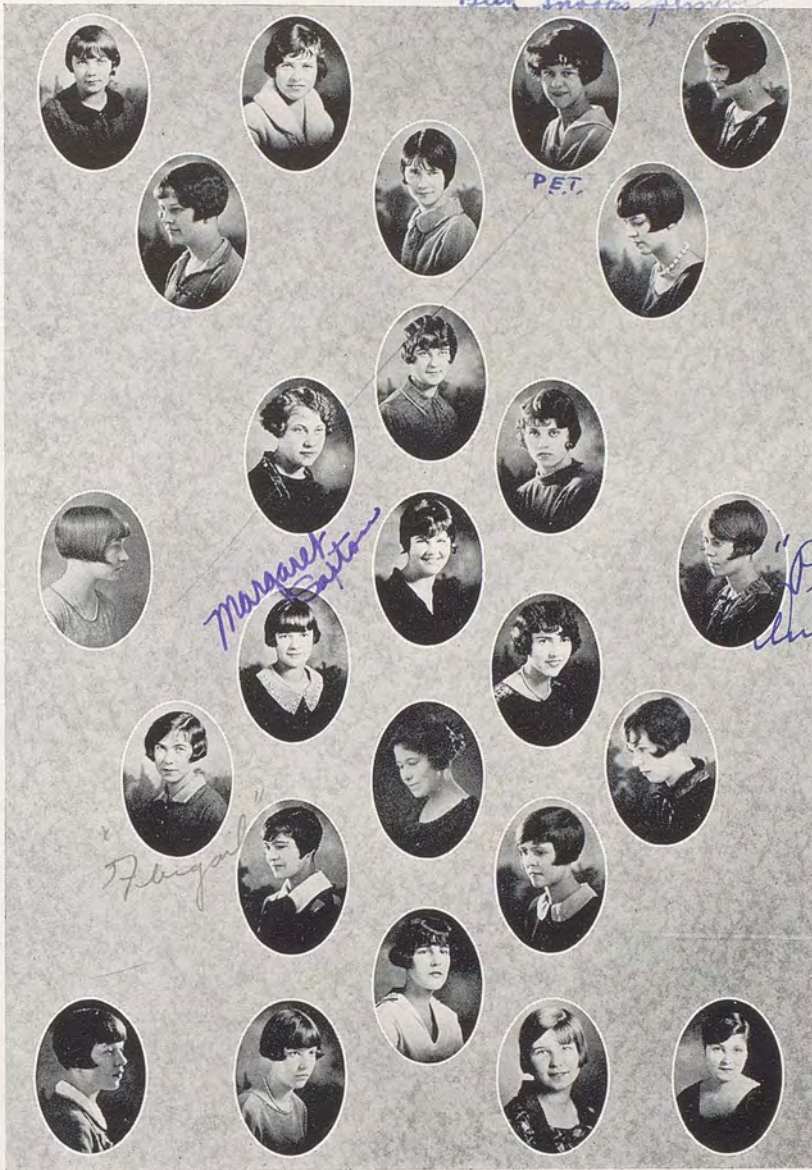
*Advisor*—MISS PAULINE FORD

The aim of the El Adrea may be considered twofold—educational and social. To fulfill its educational function, every month the club has a meeting of a serious nature. The programs are of varied character such as helpful talks from outsiders; the study of the opera; play production and reviews of modern literature. The dances, dinners, and picnics, as social events, are always gay affairs. The girls make a special point of being loyal Wa-Hi supporters by attending the games in a group and otherwise lending their support.

During the past years it has been the custom of the El Adreas to produce a play with the Gimmel Teths. Three short plays, "The Florist Shop", "The Minuet", and "In the Spring a Young Man's Fancy" were put on. The audience was well entertained. Between the plays several vaudeville skits were presented.

We take this opportunity to voice a word of appreciation and thanks to our loved advisor, Miss Ford. She has given us her time, advice, and aid in the past year, and has been a help and inspiration to us all.





A. Hinshaw	Ramsbeck	H. Hutsell	Gorman	Stubblefield
Walker		T. Hutsell		Yenney
Holdereid	Schwarz	Harvey	Moore	A. Pember
F. Hinshaw	Saxton	Miss Ford	Leonard	Agnew
	Shaw	Alexander	E. Pember	
Speer	Berreman		Clark	Walters



The Royal

Blue



OFFICERS

## Officers Club

### Officers

#### *First Semester*

Captain Delvin Sickler.....*President*  
 Lieutenant Nicholas Sullivan.....*Vice-President*  
 Lieutenant Joe Kirkman.....*Sec.-Treas.*  
 Lieutenant William Ferguson.....*Reporter*

#### *Second Semester*

Major Edward Unruh  
 Lieutenant Robert Golden  
 Lieutenant William Ferguson  
 Lieutenant Ralph Miller

### Membership Roll

Captain Leland Archer  
 Lieutenant William Ferguson  
 Lieutenant Robert Golden  
 Second Lieutenant Albert Gruber  
 Lieutenant Harold Jackson  
 Lieutenant Joe Kirkman  
 Captain Clifford Long  
 Captain Walter McCalley

Lieutenant Ralph Miller  
 Lieutenant Chester Morrison  
 Second Lieutenant Fred Reed  
 Second Lieutenant Sanford Sherman  
 Captain Delvin Sickler  
 Lieutenant Nicholas Sullivan  
 Lieutenant Fred Sundquist  
 Major Edward Unruh

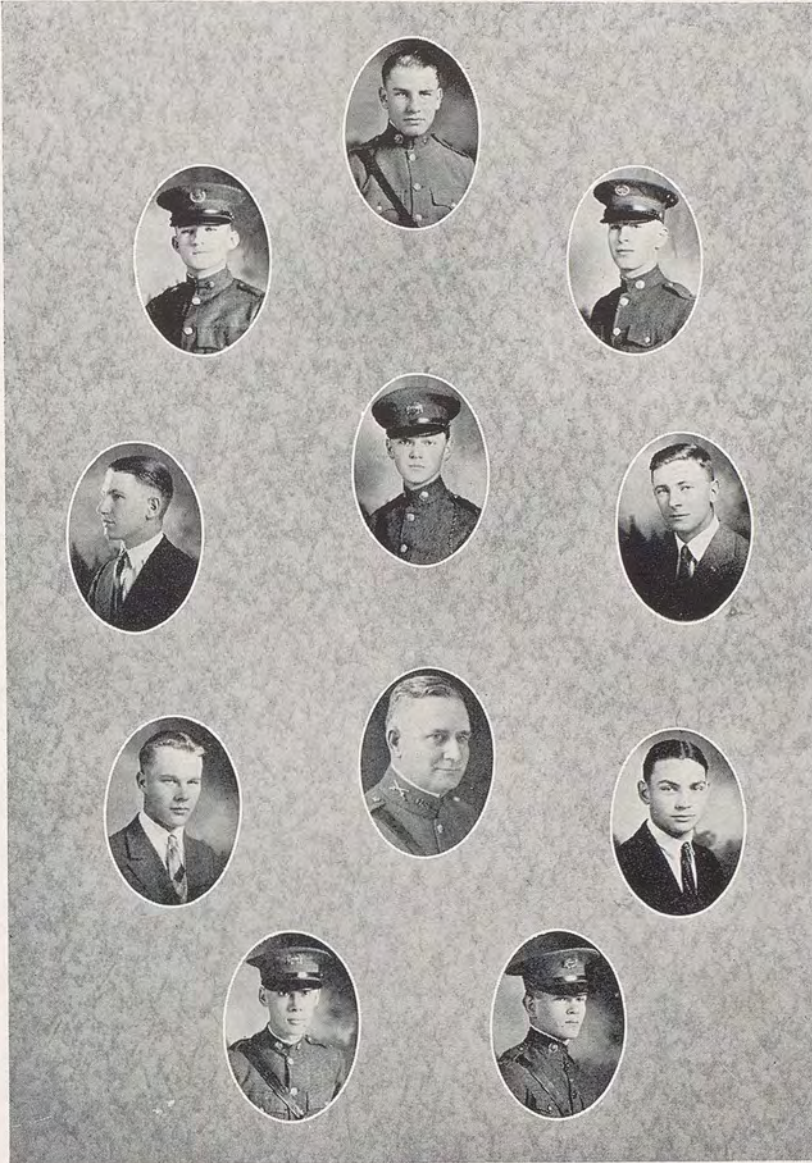
*Advisor*—COLONEL JESSE M. HOLMES

The Officers Club can consider this year a successful one, in spite of some hardships it has had to overcome. At the beginning of the term, there were only three members who returned to take up the work of the club. These three met, voted in new members and made a very good start. The Officers Club was raised from a two point club to a seven point club, which bettered it in every way. As a two point club, every officer in the R. O. T. C. was automatically a member, but as it is a seven point club, it becomes an elective society.

The Officers Club has upheld the standards this term for which it has always stood. Everything the club has done has been for the welfare of the R. O. T. C. Meetings have been held weekly throughout the year.

The Faculty Advisor, Colonel J. M. Holmes, has been present at all meetings and social functions. Colonel Holmes has supervised every accomplishment of the club and suggested several of the changes that were new in the unit this year.





	LeRoux	Archer	Miller
Lane		Sullivan	Morrison
	Sundquist	Col. Holmes	Jackson
	Nelson		Kirkman





# Vivante

## Officers

*First Semester*

*Second Semester*

Frances Staley .....	<i>President</i> .....	Frances Staley
Frances Page .....	<i>Vice-President</i> .....	Frances Page
Myrtle Biersner .....	<i>Secretary</i> .....	Myrtle Biersner
Marie Roff .....	<i>Treasurer</i> .....	Marie Roff
Virginia Thompson .....	<i>Reporter</i> .....	Virginia Thompson

## Membership Roll

Ethel Alexander  
 Genevieve Allison  
 Blanche Biersner  
 Myrtle Biersner  
 Nadine Brown  
 Pauline Cox  
 Frances Drake  
 Ruth Eubanks  
 Velma Hart  
 Lois Johnson  
 Frances Page  
 Edna Patrick

Maragret Rabe  
 Marie Roff  
 Virginia Robb  
 Frances Staley  
 Margaret Stockton  
 Berthyl Stockton  
 Virginia Thompson  
 Gertrude Wallis  
 Josephine Wiseman  
 Loretta Schwandt  
 Bernice Young

*Advisor*—Miss BESS KIRK

The purpose of the Vivantes is both educational and social. The girls of the club strive to uphold the high standards of Wa-Hi. This year they have succeeded to some extent by raising their standard of grades.

The educational meetings have been made very interesting by talks on "Etiquette" given by the club members. Many social meetings were held in the homes of the girls so that the mothers might come into closer contact with the members of the society. Two dances were given during the year which proved to be very successful both from a social and financial standpoint.

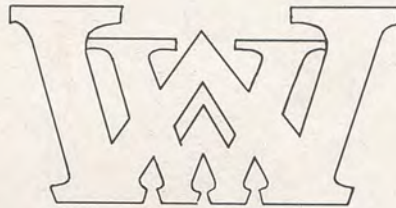
The Vivantes have had a most successful year and much credit is due to Miss Kirk, the advisor, who has taken a great interest in the society and its members. She has given her time and suggestions gladly to the girls and the club wishes to thank her for her co-operation during the year 1925-26.





Young	Hart	Alexander	M. Biersner	Page
Stockton	B. Biersner	Brown	Roff	Thompson
Robb	Wallis	Staley	Wiseman	Johnson
Eubanks	Allison	Miss Kirk	Cox	Rabe





## Athletae

### Officers

<i>First Semester</i>		<i>Second Semester</i>
Ethel Alexander .....	<i>President</i> .....	Ethel Alexander
Jean Stockdale .....	<i>Vice-President</i> .....	Jean Stockdale
Freda Rosenberry .....	<i>Secretary</i> .....	Freda Rosenberry
Pauline Thomas .....	<i>Treasurer</i> .....	Pauline Thomas
Dorothy Crawford.....	<i>Reporter</i> .....	Iris Hoon

### Membership Roll

Ethel Alexander  
Dorothy Crawford  
Ruth Eubanks  
Bertha Franks  
Ruth Garvey  
Vera Hogben  
Iris Hoon

Isabel Kane  
Dorothy Moore  
Freda Rosenberry  
Mildred Shaw  
Jean Stockdale  
Bernice Struthers  
Pauline Thomas

*Advisor*—MISS ESTHER LAMB

The Athletae Club is an organization in Wa-Hi for all girls who have earned a "W" in athletics. The purpose of the club is to arouse interest in girls' athletics; to maintain a spirit of loyalty to class and school; and to develop true sportsmanship. Membership is open to all girls in Wa-Hi who have won a letter in either basketball, tennis or personal efficiency and is retained through adherence to the principles of the Constitution and through a scholarship standing of 80 per cent.

Business and educational meetings are held every first Friday of the month. At the educational meetings a subject pertaining to health or athletics is discussed. One such meeting consisted of a swimming party at the Y. M. C. A. in which the various swimming strokes were demonstrated by the different members of the club. Mr. Applegate, secretary of the Y. M. C. A. gave the girls a talk on "Athletics in Moderation." Social meetings are held on the last Friday of every month.

Miss Lamb, the girls' athletic director and the club advisor, has been a very capable leader to whom much of the success of the club is due. Every girl in the organization has been personally benefited by Miss Lamb's insistence upon correct posture and healthful habits of living and the principles of corrective physical education in general.





Hoon

Rosenberry

Eubanks

Kane

Shaw

Frank

Garvey

Alexander

Crawford

Stockdale

Struthers

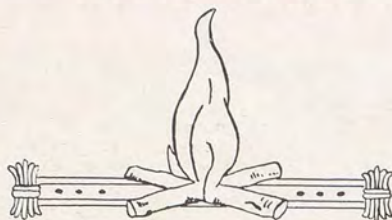
Thomas

Miss Lamb

Hogben

Moore





# Ayita Camp Fire

## Officers

### First Semester

Marian Wolf .....	<i>President</i> .....	Marian Wolf
Janice Carmichael.....	<i>Vicé-President</i> .....	Laura Mathieson
Mary Garner .....	<i>Secretary</i> .....	Frances Burke
Mildred French .....	<i>Treasurer</i> .....	Marjorie Wellman
Marjorie Wellman .....	<i>Reporter</i> .....	Pauline Thomas

### Second Semester

## Membership Roll

Juliana Bland	Hazel Gross
Frances Burke	Laura Matheison
Janice Carmichael	Marie Reece
Vivian Cochran	Marie Snodgrass
Stella Collard	Louise Tellier
Edna Collard	Pauline Thomas
Marvel Ferguson	Marjorie Wellman
Mildred French	Marian Wolf
Mary Garner	

*Advisor*—MISS DOROTHY JONES

Ayita Camp Fire has come to the close of a very successful year, a year which has brought to its members a great deal of joy in the tasks accomplished, honors gained and pleasures enjoyed.

During the year just closed, our members have tried to live up to their name "Ayita," which means "workers." Although we have striven to follow all of the Laws of the Fire, particular attention was paid to the first law, "Seek Beauty," which has led us to the study of Italian art.

Aside from the educational work there were also ceremonial and business meetings. Our social calendar included picnics, hikes, masquerades and progressive dinners.

Wa-Hi has every right to be proud of Ayita Camp Fire for it has not only maintained a high scholastic record but also has been represented in nearly all phases of school life. Among the first twelve members taken into the National Honor Society this year, there were three members of this organization.

The members of Ayita Camp Fire wish to thank their guardian, Miss Jones, and her assistant, Miss Lindner, for the interest shown and the time spent; for to them is due much of the Ayita Camp Fire success.





Wellman  
Ferguson  
Thomas  
Garner  
French

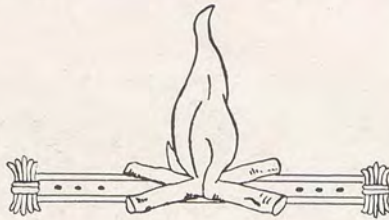
Miss Jones

Tellier  
Cochran  
Gross  
Reece

Carmichael

Wolf  
Burke  
Doolin  
Mathieson  
Snodgrass





## Klahanee Camp Fire

### Officers

*First Semester*

Marian Torkelson  
 Velma Whiting  
 Roberta Dysart  
 Arloa Ferney  
 Zola McDougall

*President*  
*Vice-President*  
*Secretary*  
*Treasurer*  
*Reporter*

*Second Semester*

Marian Torkelson  
 Velma Whiting  
 Roberta Dysart  
 Arloa Ferney  
 Zola McDougall

### Membership Roll

Jessie Applegate  
 Alice Craig  
 Aletha Colt  
 Hazel Deye  
 Roberta Dysart  
 Arloa Ferney  
 Lela Gilman  
 Vera Hogben  
 Dorothy McCauley

Bertha McCraw  
 Zola McDougall  
 Agnes Silkforth  
 Marian Torkelson  
 Dorothy Wentsch  
 Velma Whiting  
 Zelia Witt  
 Nancy Witschge  
 Marguerite Woolcutt

*Advisor*—MISS BLANCHE REED

It has been the aim of the Klahanee Camp Fire, during this year to live up to the Camp Fire Creed. Every member has worked steadfastly toward that goal and much time and energy have been spent in trying to make our club one of the leaders in Wa-Hi. Not only have the members been upholding the Camp Fire Creed but they have also been obeying the rules and regulations of Wa-Hi.

At Christmas the girls gave a party for a group of poor children who otherwise would not have had a happy Christmas. In this way, Klahanee lived up to the law, "Give Service." Also, the members are working diligently to keep their grades high in hopes of obtaining the Faculty Scholarship Cup, thereby obeying another Law of the Fire, "Pursue Knowledge."

Klahanee has certainly appreciated the work of its guardian, Miss Reed, of the Latin Department. Miss Reed has put her heart and soul into the work and has won the love and admiration of every member of the group. We were indeed sorry to lose our assistant guardian, Miss Van Winkle, of the Nurses' Registry, but were fortunate to secure in her stead, Mrs. Nettie Sherman, who is fast becoming a favorite with the girls.





Colt

McDougall

Gilman

Ferney

Hogben

McCauley

Applegate

Torkelson

Miss Reed

Witschge

Witt

Woolcutt

Whiting

Deye

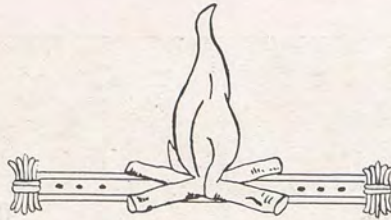
Wentsch

Craig



The Royal

Blue



# Waukeenah Camp Fire

## Officers

### First Semester

Clara Gross .....	<i>President</i> .....	Clara Gross
Millie Stanton .....	<i>Vice-President</i> .....	Mildred Hand
Hazel Meiners.....	<i>Secretary</i> .....	Aletha Chadsey
Allegra Hartsock .....	<i>Treasurer</i> .....	Mae Neumeier
Ethelyn Hand .....	<i>Reporter</i> .....	Gladys Neumeier

### Second Semester

## Membership Roll

Flora Brown  
 Aletha Chadsey  
 Mary Chase  
 Mary Curcio  
 Margaret Davis  
 Clara Gross  
 Allegra Hartsock  
 Jeannette Hand  
 Mildred Hand

Ethelyn Hand  
 Grace Hazelbaker  
 Hazel Meiners  
 Gladys Neumeier  
 Mae Neumeier  
 Sylvia Sibley  
 Millie Stanton  
 Georgia Young

*Advisor*—MISS CYNTHIA HORNIBROOK

The Waukeenah Camp Fire, although not a new organization, began the year with practically all new members, as most of last year's members were graduated.

Due to the true Camp Fire spirit which all the girls have exhibited, they have spent a very successful year. This year, as a group, the girls have tried to execute the Laws of the Camp Fire, and to show to everyone the standards a true camp fire girl tries to keep. They have, also, tried to uphold the standards of Wa-Hi by seeking knowledge.

The girls wish to take this opportunity to thank our guardian, Miss Hornibrook, and assistant guardian, Miss Gross, for the efforts they have put forth to make the work of this year a success.





Davis

Meiners

Hand

Chadsey

M. Neumeier

Stanton

Curcio  
G. Neumeier

Brown

Hartsock

Miss Hornibrook

Hazelbaker





## Nissaki Camp Fire

### Officers

*First Semester*

*Second Semester*

Drue Perrin .....	<i>President</i> .....	Drue Perrin
Marguerite Biersner .....	<i>Vice-President</i> .....	Marguerite Biersner
Helen Googins .....	<i>Secretary</i> .....	Helen Googins
Dorothy Kelly .....	<i>Treasurer</i> .....	Dorothy Kelly
Bernice Becker .....	<i>Reporter</i> .....	Bernice Becker

### Membership Roll

Florence Bathe  
 Bernice Becker  
 Marguerite Biersner  
 Ruth Brown  
 Suzanne Brown  
 Grace Crawford  
 Dorothy Crawford  
 Bethel Goodman  
 Helen Googins

Virginia Hundley  
 Dorothy Kelly  
 Laura Lofthus  
 Helen May  
 Drue Perrin  
 Florence Ploof  
 Edna Saunders  
 Mayme Wilson  
 Goldie Whetsel

*Advisor*—MISS MARGARETTA JOHNSON

The past year has been a delightful one for the Nissaki Camp Fire group. The girls have tried hard to live up to the Law of the Fire. The three outstanding aims of the group have been: to Seek Beauty, which has been carried out by the performing of the various handicrafts; to Give Service, for which ample opportunities are offered each day; to Pursue Knowledge, which has been done by all the girls in making above the standard grades in their studies.

Several of our girls have been chosen as members of the National Honor Society. This is taken by the group to be a fulfillment on the part of these girls of the vow to Pursue Knowledge, and we are exceedingly proud of them. Altogether we feel that this has been a successful as well as a pleasant year.

Although our leader, Miss Johnson, has been a Guardian of the Fire a comparatively short time, she has already gained the love and admiration of every member, and we expect to progress far in carrying out our aims under her capable supervision.





Lofthus  
Sanders  
  
Wilson  
  
Brown  
May

G. Crawford  
  
Biersner  
Hundley  
Whetsel

Webster  
  
Perrin  
Miss Johnson

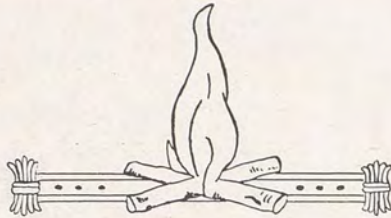
D. Crawford  
  
Googins  
Becker  
Kelly

Kirk  
Bathe  
  
Schneller  
  
Goodman  
Ploof



The Royal

Blue



# Okihi Camp Fire

## Officers

### *First Semester*

Louise Fausti ..... *President*.....  
 Carlene Oberholtzer ..... *Vice-President* .....  
 Louise Gibson ..... *Secretary*.....  
 Bernice Baker ..... *Treasurer*.....  
 Alice Henneberger ..... *Reporter*.....

### *Second Semester*

Louise Fausti  
 Carlene Oberholtzer  
 Louise Gibson  
 Bernice Baker  
 Alice Henneberger

## Membership Roll

Bernice Baker  
 Jennie Dorrance  
 Louise Fausti  
 Louise Gibson  
 Irene Graybill  
 Mayme Graybill  
 Alice Henneberger  
 Martha Holwager  
 Laura Noyer

Gladys Knight  
 Lydia Laun  
 Oliva McGilvary  
 Carlene Oberholtzer  
 Bertha Redfield  
 Roberta Reser  
 Edith Monroe  
 Edna Teal

*Advisor*—MISS GRACE MILLBROOK

*Assistant Advisor*—MISS RUTH WENSTROM

Okihi's resolution this year is: "To spread the cheer and joy that is embodied in Camp Fire." A group of willing workers, a splendid guardian, and the able assistance of Miss Wenstrom assure the fulfillment of this aim.

The past year has been a delightful and busy one. Many new members have been taken in and have started on the work of winning honors and ranks and endeavoring to keep the Laws of Camp Fire.

Okihi Camp Fire takes this opportunity to thank its guardians, Miss Millbrook, and Miss Wenstrom, for their services and ceaseless energy in promoting the standards of camp fire.





Oberholtzer

Laun

Dorrance

Henneberger

Knight

Fausti

McLaughlin

M. Graybill

Gibson

Miss Millbrook

Holwager

Baker

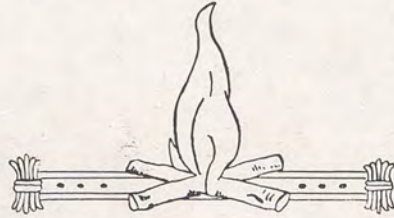
Teal

I. Graybill



The Royal

Blue



# Watanopa Camp Fire

## Officers

### *First Semester*

Jessie Thomas.....*President*  
 Katie Antes.....*Vice-President*  
 Margery Thomas.....*Secretary*  
 Lucille Harp.....*Reporter*  
 Bertha Trowbridge.....*Reporter*

### *Second Semester*

Lucille Harp  
 Eleanor Allison  
 Frances Miller  
 Virgil Hopkins  
 Bertha Trowbridge

## Membership Roll

Katie Antes  
 Sadie Antes  
 Myrtle Hall  
 Lucille Harp  
 Josephine Healy  
 Virgil Hopkins  
 Eleanor Allison

Frances Miller  
 Jessie Thomas  
 Margery Thomas  
 Bertha Trowbridge  
 Elsie Eckhardt  
 Mary Buck

*Advisor*—MISS PEARL BONNER

The Watanopa Camp Fire was organized just eighteen months ago under the guardianship of Miss Pearl Bonner, who has guided us most successfully through the years of 1925 and 1926.

This Camp Fire has been unfortunate in regard to its membership, since several members were lost by graduation and others by leaving the city. Despite this fact, we have carried on, showing our true Camp Fire spirit, and as a result, we have come through "with flying colors." The membership of this group is of girls who are wideawake and believers of the old saying, "if a thing is worth doing at all, it is worth doing well." This feeling is shown by the support the group has given its officers and by the work it has done during the past year.

We have held several enjoyable parties at the homes of the members; have taken several hikes; and have made one educational visit to the penitentiary, during the past year. Although this group will be greatly handicapped next year by the graduation of several of its members, it is looking forward to greater success than ever during 1926 and 1927.





Myrtle  
(→)222

Walton

Antes

Eckhardt

Hopkins

Miller

Thomas  
Miss Bonner

Healy

Hall

Harp

Thomas

Buck





## El Circulo Espanol

### Officers

*First Semester*

Nida Nelson .....  
 Robert Church.....  
 Myrtle Biersner.....  
 Raymond Derrick.....  
 Blanche Biersner.....

*President*.....  
*Vice-President*.....  
*Secretary*.....  
*Treasurer*.....  
*Reporter*.....

*Second Semester*

Robert Church.....  
 Marguerite Woolcut.....  
 Josephine Wiseman.....  
 Kennard Bennett.....  
 Alice Craig.....

### Membership Roll

Marie Agnew  
 Vernon Baker  
 Blanche Biersner  
 Myrtle Biersner  
 Fred Bayles  
 Kennard Bennett  
 Callie Bruce  
 Edna Bell  
 Robert Church  
 Frances Clark  
 Alice Craig  
 Purdy Cornelison  
 Leland Demory

Raymond Derrick  
 Willard Ormsby  
 John Prather  
 Helen Potter  
 Mary Richmond  
 Catherine Schwarz  
 Nick Sullivan  
 Millie Stanton  
 Velma Whiting  
 Glen Whitney  
 Josephine Wiseman  
 Margery Doolin  
 Viola Yenney

Arthur Geist  
 Helen Geist  
 Arline Fix  
 Lola Hunt  
 Thelma Hutsell  
 Edythe Holdereid  
 Houghton Gross  
 Bob Lenfesty  
 Thomas Leake  
 Paul MacGowan  
 Dorothy McCauly  
 Nyda Nelson

*Advisor*—MISS JOSEPHINE HAGERMAN

The purpose of El Circulo Espanol is to promote further interest in Spanish.

At our educational meetings Spanish authors are studied and articles on their lives and literary works are given in detail by various members of the organization. Each semester one dance is given of a distinctive Spanish nature. We cannot stress strongly enough the benefit of the Spanish Club to its members, since the meetings are both instructive and delightful.

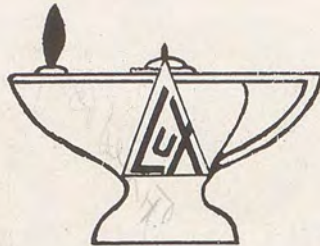
The Spanish Club has spent a most successful and prosperous year, due to the excellent sponsorship of the faculty advisor, Miss Josephine Hagerman, who has given her time and many valuable suggestions to the club. The Spanish Club wishes, therefore, to thank her for her splendid interest and kind help in making this organization a success.





Craig	Baker	McCauley	Demory	Bayles	Bennett
Agnew	Schwarz	Biersner	Whitney	Biersner	Sullivan
Yenney	Holderied	Church	Nelson	Derrick	Stanton
Hutsell	Potter	Lenfesty	Leake	Hunt	H. Geist
Gross	Clark	Richmond	Cornelison	Ormsby	Woolcutt
					Bell
					Whiting
					Bruce
					A. Geist
					Fix





## Classical Club

### Officers

*First Semester*

Patricia Kane.....*President*  
 Jacqueline Fagely.....*Vice-President*  
 Mary Stirton.....*Secretary*  
 Alexander Campbell.....*Treasurer*  
 Joe Kirkman.....*Reporter*

*Second Semester*

J. B. Hunley  
 Florence Hinshaw  
 Mary Stirton  
 Alexander Campbell  
 Paul McGowan

### Membership Roll

Bernice Becker  
 Alexander Campbell  
 Zylph Courmyer  
 Raymond Derrick  
 Winifred Dunphy  
 Jaqueline Fagely  
 Mamie Graybill  
 Ethel Harding  
 Florence Hinshaw  
 J. B. Hunley  
 Lola Hunt  
 Patricia Kane  
 Isabel Kane  
 Jack Kirkman  
 Joe Kirkman

Leah Lester  
 Paul McGowan  
 Paine Paul  
 Eva Peterson  
 Ned Ransom  
 Walter Ryan  
 George Seebeck  
 Margaret Stirton  
 Mary Stirton  
 Louise Tellier  
 Emma Thomas  
 Marian Torkelson  
 Glen Whitney  
 Geoffrey Yake  
 Elvira Young

*Advisors—MISS LUCILE McINTYRE*

The Classical Club has had a most successful year, due to the interest taken by the members, combined with the generous aid of our advisor, Miss McIntyre. If it be true that a safe criterion for judging an undertaking is the result it has to show, the club program has been a success, for it shows a list of activities unsurpassed by any other club, in number, variety, pep, and school support. The members have once won the Faculty Scholarship Cup, they have given an artistic play "The Slave Girl"; and they have produced with credit "The Saturnalia."

The club has held its meetings every other Tuesday after school and has had very fine programs and attendance at each. In general, the Classical Club has been successful in creating friendship among the students of Wa-Hi and in fostering things classical.





M. Stirton  
Young  
Fagely  
Cournyer  
Hunt

Dunphy  
Whitney  
Campbell  
Torkelson  
McGowan  
Harding

Mary Stirton  
Seebeck  
Kane  
Miss McIntyre  
Thomas  
Hunley

Derrick  
Becker  
Tellier  
Graybill  
Ransom  
Peterson

Paul  
Hinshaw  
Lester  
Jack Kirkman  
Joe Kirkman



The Royal

Blue



# Order of Gregg Artists

## Officers

<i>First Semester</i>		<i>Second Semester</i>
Dorothy Fluallen	<i>President</i>	Helen Fields
Charles Johnson	<i>Vice-President</i>	Margaret Rabe
Pearl Long	<i>Secretary</i>	Pearl Long
Pearl Long	<i>Treasurer</i>	Pearl Long
Helen Fields	<i>Reporter</i>	Martha Blahm

## Membership Roll

Katie Antes	Helen Fields	Charles Johnson
Gertrude Ardrey	Arloa Ferney	Joe Locati
Martha Blahm	Dorothy Fluallen	Pearl Long
Vera Bennett	Clara Gies	Henrietta Schrieber
Jacob Butherus	Lela Gilman	Ethel Smith
Vera Blackman	Velma Hart	Margaret Rabe
Marvel Coffin	Grace Hazelbaker	Daniel Riehl
Lucille Eagon		

*Advisor*—MISS EMMA ALBER

The Order of Gregg Artists in the Walla Walla High School is for the purpose of encouraging the development of skillful shorthand writing. This organization is both National and Honorary, which factors tend toward success.

Membership is earned and granted to advanced shorthand students whose notes show artistic merit—notes must be correct in theory, accurate in proportion and execution, free in movement.

Encouraging higher scholarship, cooperating in all school activities and supporting all worthy student affairs have been the watchwords of this organization. The members have unselfishly devoted much time typewriting articles and notices for various school activities and all school news for the town papers.

Parliamentary law was taken up in a very interesting way at the educational meetings and found very practical and beneficial to every member.

Miss Cultra has shown her interest in the O. G. A. Organization by interesting her beginning shorthand students in the work of the club and by attending the programs and social activities.

The social affairs have encouraged good fellowship, jolly comradeship, better leaders, and lasting friendships.

With the aid and kindly advice of our advisor, Miss Emma Alber, the club feels that it has had a very delightful and helpful year.





Gilman	Butherus	Locati	Coffin	Hart
Blackman	Fields	Ardrey	Crocker	Eagon
Smith	Long	Fluallen	Johnson	Bennett
Hazelbaker	Schrieber	Miss Alber	Biersner	Riehl
Blahm	Antes	Rabe	Gies	Ferney





# Ag Club

## Officers

<i>First Semester</i>		<i>Second Semester</i>
Herbert Brown	..... <i>President</i> .....	Ralph Miller
Bob Horsley	..... <i>Vice-President</i> .....	Melvin Krumbah
Arthur Kent	..... <i>Secretary</i> .....	Laurel Baker
Ralph Miller	..... <i>Reporter</i> .....	Bob Horsely

## Membership Roll

Percy Aldrich	Harold Frazier	Clark McKinney	Clem Russell
Laurel Baker	Daris Frazier	William McKinney	John Schaeffer
Franklin Beatty	Harry Fritzier	Stephen McIntyre	Hugh Smith
Paul Beatty	Allen German	Joe McFarland	Eugene Stiller
Walter Blair	Cedric Googins	John Melbrath	Marvin Stiller
Herbert Brown	Emery Goodman	Ralph Miller	Harold Stoller
Donald Castle	Bob Horsley	Billy Miller	Arnold Stoller
John Chase	Clinton Jobe	George Neher	Howard Summers
Raymond Compou	Byron Jobe	Richard Owsley	Dan Tuke
Byron Dague	Arthur Kent	Earl Richmond	Eugene Turney
William DeWitt	Melvin Krumbah	Kenneth Robertson	William Upton
William Falconer	Eddie Lusk	Fred Rohn	Roy Yaker
Walter Fields	Jack Lowden	Victor Rogers	Charles Zieger
Edward Fields	Leroy Lewis	Alfred Ruth	

*Advisor*—MR. M. G. HARNON

Each of the many clubs in Wa-Hi professes to have the greatest amount of worthwhile activities to its credit, however the Ag Club, with fifty-five members feels that it holds the record this year for its various and useful pursuits.

One of the first activities of the year was the exhibit which the club maintained at the Walla Walla County Fair. Class work of all four years in agriculture was represented in the booth which displayed cereals, vegetables, fruits, eggs and chickens, all of which were produced on the projects of students. The booth won first place. The stock judging team also won the Falkenberg Trophy Cup at the County Fair.

At the International Stock Judging Show held in Portland the team composed of Donald Castle, Fred Rohn, Edward Fields, and Herbert Brown took fourth place. This team was later granted a stock judging "W" by the Wa-Hi Board of Control.

The club feels that the big event of the year was production of the play "Charley's Aunt" in the Auditorium May 7.



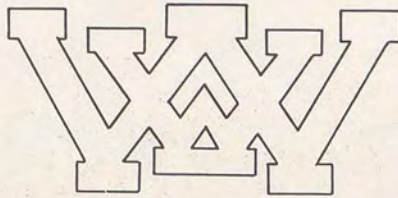


WA-HI AG CLUB



The Royal

Blue



# W.W. Club

## Officers

*First Semester*

*Second Semester*

Lynn Croxdale .....	<i>President</i> .....	Lynn Croxdale
Dick Timmons .....	<i>Vice-President</i> .....	Dick Timmons
Byron Dague .....	<i>Secretary-Treasurer</i> .....	Byron Dague

## Membership Roll

Stirlen Applegate  
 John Bense  
 James Benson  
 Cecil Bramhall  
 Eldwin Briggs  
 Daniel Coble  
 Lynn Croxdale  
 Byron Dague  
 Harry Ebding  
 Harry Ehrlich  
 Carm Farrens  
 Emery Goodman

Robert Horsley  
 Arthur Kent  
 Lewis Lutchter  
 Lewis Paterson  
 Virgil Perry  
 Robert Rogers  
 Melvin Simons  
 Robert Summers  
 Howard Stockdale  
 Everett Thomas  
 Dick Timmons  
 Arick Van Winkle

*Advisor*—MR. SABIN RICH

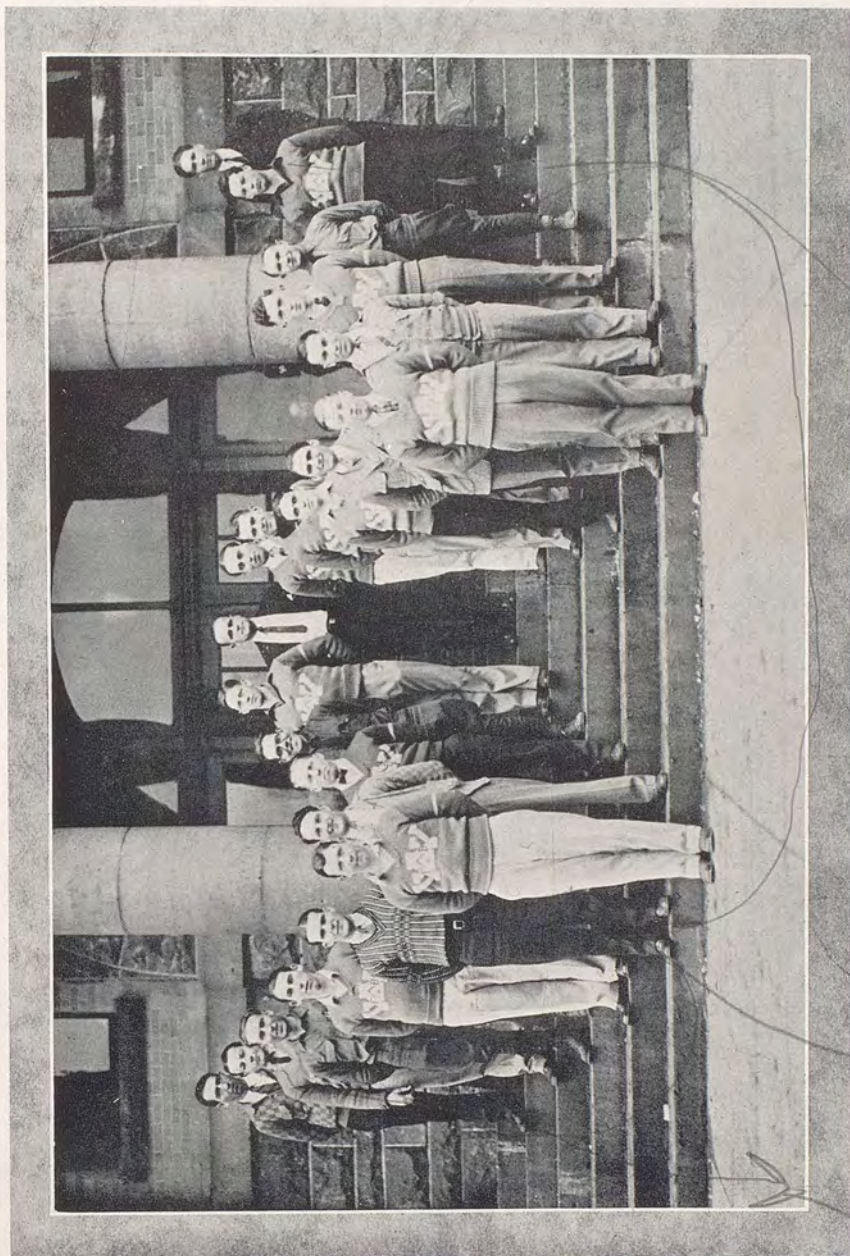
This year has been one of the most successful years for the W. W. Club since its beginning in 1916. The club was organized for the purpose of promoting good fellowship in school activities and supporting worthy student enterprises. The club members are known by their "W" which is gained by competing in the different athletic activities, such as football, and track. These letters mean many weeks of hard work and give the student something of which to be proud.

The club started this year with eleven members and ended with twenty-five. There were nine new members from football and three new members from basketball.

The Varsity Ball which is given by the W. W. club in honor of the football team proved to be a very successful event. The smoker was a success financially and served as a very good form of entertainment.

All the members wish to express their appreciation to Mr. Rich, the coach, for his co-operation and wish him success next year that he may be able to accomplish even greater things.





W. W. CLUB





Brixey

Stirton

Graybill

Fausti

## L'Alliance Francaise

### Officers

<i>First Semester</i>		<i>Second Semester</i>
Leota Brixey .....	<i>President</i> .....	Leota Brixey
Mary Stirton .....	<i>Vice-President</i> .....	Mary Stirton
Irene Graybill .....	<i>Secretary</i> .....	Irene Graybill
Ruth Steele .....	<i>Reporter</i> .....	Ruth Steele

### Membership Roll

Claire Applegate  
 Leota Brixey  
 Alexander Campbell  
 Grace Crawford  
 Louise Fausti  
 Hazel Gross  
 Ethel Harding  
 Calvin Iverson  
 Marcella Julius

Carlene Oberholtzer  
 Eva Peterson  
 Ruth Steele  
 Margaret Stirton  
 Mary Stirton  
 Dora Young  
 Jean Walton  
 Grace Williams

*Advisor*—MR. C. M. BERNIER

The French Club, which was forced to undergo a complete reorganization during the first semester, has since been a source of much interest to its members. The aim of the organization is the promotion of French in the High School.

The business, educational, and social meetings of the French Club take place in successive order on every other Tuesday after school.

One of the most interesting meetings since the re-organization, was the educational meeting, which consisted of a musical program held in the auditorium, December eighth, when all the new members were present. Among the various other activities, the French Club usually takes charge of an assembly which has proved very beneficial to the members of the club as well as entertaining to the student body as a whole.

Our advisor, Monsieur Bernier, who is new at Wa-Hi this year, has willingly given the club his assistance at all times, and we are glad to take this opportunity to thank him.





Danes

Deye

Iverson

Miss Peterson

## Art Club

### Officers

*First Semester*

Gibson Danes ..... *President*  
 Beryl Tweedy ..... *Vice-President*  
 Hazel Deye ..... *Secretary*  
 Calvin Iverson ..... *Treasurer*  
 Leo Carde ..... *Reporter*

*Second Semester*

Gibson Danes  
 Beryl Tweedy  
 Nellie Carr  
 Calvin Iverson  
 Leo Carde

### Membership Roll

Amy Backus  
 Miss Bonner  
 Leo Carde  
 Nellie Carr  
 Dorothy Crawford  
 Gibson Danes  
 Hazel Deye  
 Marie Donley  
 Paula Ganders

Calvin Iverson  
 Ethel Kopf  
 Christine McMillan  
 Ethel Packer  
 Violette Smith  
 De Turner  
 Beryl Tweedy  
 Blanche Wegge  
 Viola Wilson

*Advisor*—MISS IVA PETERSON

*Instructor*—MISS MARGARETTA JOHNSON

The Art Club was organized in the spring of 1925. The club is open to all persons interested in art. Despite the fact that there is no art department in Wa-Hi, the group soon had a large membership.

For the work of the first semester the club was divided into two sections for study. One section studied poster making, titles, and headings for publications; the other studied design for arts and craft.

An art bazaar was held December seventeenth and eighteenth. The proceeds of the bazaar were used to buy art books and design plates.

The second semester was devoted to the study of "Art in Everyday Life." This course consisted of structural and decorative design, dress design and interior design.

Miss Margaretta Johnson, supervisor of Art in the public schools, has met with the club every Thursday. She has unselfishly given her time to the club as a whole, and also to the art problems of individual members.



# The Royal

# Blue



Ryan

Church

Richmond

LeRoux

## Thrift Club

### Officers

#### *First Semester*

Mary Richmond

Robert Church

Walter Ryan

Lorraine LeRoux

*President*

*Vice-President*

*Secretary*

*Head Cashier*

#### *Second Semester*

Mary Richmond

Robert Church

Walter Ryan

Lorraine LeRoux

One of the newest institutions at Wa-Hi is the school bank. At the beginning of the present school year the administration decided to add to the general high school activities a saving system which would tend to promote thrift. The promotion of the thrift idea by the School Bank places Wa-Hi again among the leading fifty-four schools.

A perfect student organization, known as the Wa-Hi Banking System, was formed by the election of cashiers from each of the thirty-eight roll rooms. From this group was elected the usual presiding officers and a head cashier. The first bank day was set for Tuesday morning, September 29, 1925.

Since the first bank day, the support and loyalty of the students has been clearly evinced, so that the system is now considered satisfactory and worth while. Every roll room has been represented by depositors on every banking day. Altho the average depositors for the entire school have been only about 35 per cent, many of the roll rooms have continuously had 100 per cent. The roll rooms which have had 100 per cent many times during the year are 37, 23, 25, 11, 27, 34, and 24. The highest amount deposited on any one banking day was \$121.82.

With so much success to its credit in the short period of its development, it is expected that next year will see a great increase in the number of depositors and in the number of honor roll rooms in the banking system.



The Royal

Blue



WALTER RYAN

*A student who has won the greatest honor in scholarship awards that Wa-Hi offers, the Gold Medal. His splendid standing has never been equalled in the history of the Walla Walla High School.*





# National Honor Society

## Officers

### *First Semester*

Hazel Gross.....*President*  
 Walter Ryan.....*Vice-President*  
 Elvira Young.....*Secretary*  
 Virginia Hundley.....*Treasurer*  
 Emma Thomas.....*Reporter*

### *Second Semester*

Jean Walton  
 Melvin Kennedy  
 Emma Thomas  
 Alexander Campbell  
 Mildred Shaw

## Membership Roll

Marguerite Biersner  
 Alexander Campbell  
 Winifred Dunphy  
 Mamie Graybill  
 Hazel Gross  
 Virginia Hundley  
 Patricia Kane  
 Dorothy Kelly  
 Melvin Kennedy  
 Jack Kirkman  
 Lorraine LeRoux  
 Robert McLachlan  
 Drue Perrin  
 Walter Ryan

Mildred Shaw  
 Emma Thomas  
 Allen Walton  
 Jean Walton  
 Marjorie Wellman  
 Elvira Young  
 Ethel Harding  
 Julia Schmitz  
 Marian Torkelson  
 Joe Locati  
 Fred Sundquist  
 Bernice Struthers  
 Ruth Robertson  
 Allen Crocker

*Advisor*—MISS GERTRUDE MAXWELL

The highest honor which any student can attain during his high school career is to become a member of the National Honor Society. This is a special reward for those who excel, not only in scholarship, but also in character, leadership, and service. The National Honor Society members strive to uphold these four essentials: Character, Scholarship, Leadership, and Service, not only for their own good, but for the good of their school. The existence of a National Honor Society in high school inspires the students to work and strive for this honor and thus raises the scholastic average of the school.

Although it has been organized in this high school only since the year 1923-24, this chapter of the National Honor Society feels that already it has proved its worth, and has inspired many of the students to greater effort that they may wear the pin which signifies their membership in the Society.

The Society owes much of its success to its advisors, who are the heads of the different departments in Wa-Hi. They are: Miss Maxwell, Miss McIntyre, Miss Blynn, Mr. Jordan, Mr. Tack, and Mr. Steelsmith.





Kelly

LeRoux

Kane

Kennedy

E. Thomas

Biersner

P. Thomas

Kirkman

Gross  
Miss Maxwell

Perrin

J. Walton

Campbell

Graybill

Wellman

Shaw

A. Walton

McLachlan





TILlicum CAMP FIRE

CLASSICAL CLUB

## Faculty Cup Winners

First Semester 1924-1925 .....	Tillicum Camp Fire
Second Semester 1924-1925 .....	Classical Club
First Semester 1925-1926 .....	Okihi Camp Fire

## College Scholarship Awards

Whitman Scholarship .....	Kenneth Garner
W. S. C. Scholarship .....	Helen Diebel
Colorado School of Mines .....	Delbert Lofthus

*Awarded for high general ability and special ability in science*

## Scholarship Awards

### SECOND SEMESTER 1924-1925

#### Freshmen—

Walter Ball, 2nd award, Honorable Mention  
Zola McDougall, 1st award, Bronze Pin

#### Sophomore—

Robert Church, 1st award, Bronze Fob  
Bernadine Clincy, 1st award, Bronze Pin

#### Junior—

Walter Ryan, 5th award, Gold Fob  
Caroline Ruoff, 4th award, Hon. Mention

#### Senior—

Barry Park, 2nd award, Honorable Mention  
Hilda Gaylord, 5th award, Gold Pin

### FIRST SEMESTER 1925-1926

#### Freshmen—

Walter Weaver, 1st award, Bronze Fob  
Ruth Yates, 1st award, Bronze Fob

#### Sophomore—

Walter Ball, 3rd award, Silver Fob  
Gladys McLaughlin, 2nd, Hon. Mention  
Irene Wittrock, 1st award, Bronze Pin  
Helen May, 1st award, Bronze Pin

#### Junior—

Paul McGowan, 1st award, Bronze Fob  
Ruth Baker, 3rd award, Silver Pin

#### Senior—

Walter Ryan, 6th award, Hon. Mention  
Hazel Gross, 1st award, Bronze Pin



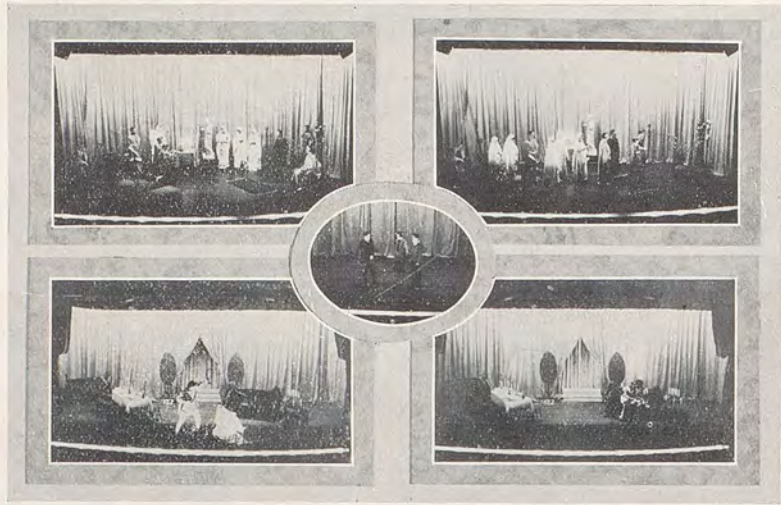
Medalists June 1925





Stage





Slave Girl

Taming of the Shrew

The Minuet

## Stage

Although Wa-Hi has no department of dramatic art, probably there is no activity that receives such whole-hearted support from the student body as does the production of plays. To the two annual plays, the Senior Play and the El Adrea-Gimmel Teth production, was added this year the play supported by the Ag Club. Beside these major productions, there have been numerous smaller productions put on by the Classical Club and other organizations for the amusement of the membership.

### Gimmel Teth and El Adrea Plays

On Friday evening, January 15, in the Wa-Hi Auditorium, the Gimmel Teth and El Adrea Societies presented three one-act plays, "The Florist Shop," "The Minuet," and "In the Spring a Young Man's Fancy."

The cast of "The Florist Shop" included Glen Eubanks, Mildred Mann, the engaged ones; Verna Lutz, the office girl; Leo Carde, the Jew; and Stan Atkin, the office boy.

The second play, "The Minuet," was a fantasy. The parts of the Marquis and Marchioness were taken by Tom Leake and Lorraine LeRoux, respectively, and that of the goaler by Walter Ryan.

"In the Spring a Young Man's Fancy Lightly Turns to Thoughts of Love" found Sam Warren as Dickey proposing to the five J's, Frances Clark, Peggy Holdereid, Patricia Kane, Lavelle Wilson and Lilah Speer as well as to Bernice Struthers, the chaperone, and to Dorothy Pullen, the maid.

As a whole, the plays were well given, and presented a pleasing variety. Much credit for the success of the plays goes to Miss Jean Acorn, the coach.





## Senior Play

Friday, March 26, the Senior Class presented James Montgomery's comedy, "Nothing But the Truth," under the able direction of Miss Wenstrom. It told of the trials and tribulations of a young man who bet ten thousand dollars that he could tell the truth for twenty-four hours. The cast was as follows:

Bob Bennett .....	Stanley Atkin
E. M. Ralston .....	Glenn Eubanks
Dick Donnelly .....	Delvin Sickler
Van Dusen .....	Allen Walton
Bishop Doran .....	James Glasspool
Gwen Ralston .....	Ruth Steele
Ethel Clark .....	Virginia Hundley
Mrs. Ralston .....	Patricia Kane
Mable .....	Winifred Dunphy
Sabel .....	Edna Sanders
Maid .....	Kathryn Rice
Business Managers .....	Walter Ryan, Hazel Gross
Advertising Managers.....	Allen Crocker, Bernice Struthers
Stage Managers.....	Stanley Root, Harold Boylan
Property Managers.....	Ralph Gibbons, Zylph Cournyer
Costume Manager .....	Leah Lester
Head Ushers .....	Mary Richmond, Carroll Palmer

## Ag Club Play

The comedy, "Charley's Aunt," was presented by the Wa-Hi Ag Club May 7 in the Wa-Hi Auditorium. As ever, the comedy drew a large and appreciative audience. The cast was excellent and, aided by Nard Jones, the Whitman dramatic star, turned out a finished production. All the boys in the play are members of the Ag Club except one of the leads, which speaks well for the ability of the boys to adapt themselves to any type of work.

The cast was as follows:

Sir Francis Chesney .....	Byron Dague
Mr. Spettigue .....	Delvin Sickler
Jack Chesney .....	Raymond Compau
Charley Wykeham .....	Herbert Brown
Lord Fancourt Babberly .....	Arick Van Winkle
Brasett .....	William Falconer
Footman .....	Melvin Kruinlat
Donna Lucia Dalvadorez .....	Thelma Wills
Kittie Verdum .....	Mildred Mann
Amy Spettigue .....	Frances Clark
Ella Delahey .....	Evelyn Sporleder
Ad Staff.....	Ralph Miller, Stephen McIntyre, Richard Owsley
Stage Managers.....	Percy Aldrich, Bob Horsley, Melvin Kennedy
Property Managers.....	Cedric Gogins, Deed Tomlinson





Crocker      Seebeck      Harris      Mr. Jordan      Boylan  
 Gross      Garner      Kane      LeRoux

## Debate

*Affirmative—*

Allen Crocker  
 Harold Boylan  
 George Seebeck

*Negative—*

Mary Garner  
 Isabel Kane  
 Albert Harris

*Advisor—MR. RUSH JORDAN*

The interest of Wa-Hi in interscholastic debate was revived in the 1926 season after a somnolence of about three years.

On February 19, a dual debate was held by Wa-Hi and Yakima High School on the question, "Resolved, That the constitution of the United States should be so amended as to empower Congress to regulate, restrain, and prohibit the labor of children under fifteen years of age." The Wa-Hi affirmative team which went to Yakima lost the decision, while the negative team which debated in the Wa-Hi Auditorium won.

The Wa-Hi debate team applied for membership in the State Debate League, but the membership could not be granted because no opponents could be found in this section of the state. Next year, if Wa-Hi cannot be a member of the League, it at least wants to arrange for a series of inter-school debates. Under the leadership of Mr. Jordan, and with the interest of the school backing it, this undertaking will surely be a success.

### ORATORY

The interest taken in the Eh Kah Nam Trophy Contest for Oratory and in the National Oratorical Contest has been unusually great this year. About fifteen applicants appeared in try-outs in the National Contest, while over thirty contested for the Eh Kah Nam Trophy. The winners in the contest are announced on the page devoted to awards.





Music





## Wa-Hi Pep Band

### Members

Archie Berreman  
 Franklin Davison  
 Lawrence DeMoss  
 Raymond Derrick  
 Wallace Evans  
 Chester Harvey  
 Roy Kirk  
 John Kremer

Francis LeRoux  
 Carroll Palmer  
 Gordon Ramp  
 Wesley Roeder  
 Donald Tetherow  
 Verl Tetherow  
 Glenn Whitney  
 Carm Farrens

Although this is only the third year that the Wa-Hi Pep Band has been organized, it is one of the liveliest and most complete organizations in our school. Music has been furnished by the Pep Band for practically all the games this year and Walla Walla has had much out-of-town advertising by this small group of boys. As there is no orchestra this year in the high school, the Pep Band has served in this capacity. The programs put on by the Pep Band in assemblies have been received with much enthusiasm. Much commendation was given the Pep Band when it played at the big Air Mail celebration at Pasco on April 6. Mr. Hal C. Tilley is the director.



The Royal

Blue



## Wa-Hi R. O. T. C. Band

The Wa-Hi R. O. T. C. Band, under the direction of Mr. Hal C. Tilley, is the largest musical organization in Wa-Hi. The original organization consisted of eighteen members, but during the organization's eight years of existence, it has steadily grown until now it has a membership of seventy-six.

The band has furnished music for military reviews and assemblies and it has played at many large town affairs.

A large concert, given by the band in the Wa-Hi Auditorium, April 2, and broadcasted, was the first of a series of concerts given under the auspices of the city of Walla Walla. The program was as follows:

March—"The Huntress" .....	King
Overture—"Norma" .....	Bellini
Serenade—"Les Millions D'Arlequin" .....	R. Digo
Selection—"Robin Hood" .....	De Koven
March—"Tenth Regiment" .....	Hall
March—"Barnum and Bailey's Favorite" .....	King
Mazurka—Russe "La Czarine" .....	Ganne
Patriotic—"American Patrol" .....	Meacham
Selection—"Campus Memories" .....	Seredy
Serenade—"Night in June" .....	King
National Anthem	



The Royal

Blue



# Wa-Hi Glee Club

A MIXED CHORUS

*"But we, we love to spend our time in singing  
Some joyous song.  
To set the air with music gaily ringing  
Is far from wrong."*

So say we all of us, as we warble gleefully in the Band room every morning at nine o'clock for we are firm believers in that fact that "mirth was made for joyous lads and lassies to call their own."

Our Glee Club is a selected chorus of mixed voices numbering twenty-four in all. We sing the classical and popular, the humorous and the pathetic. We act out our songs. We play the part of the pretty milk maid, the city dude and the Harlem goat. We entertain and amuse. We enjoy our work immensely.

Our soloists are Alice Coldiron, Beth Gorman and Laurel Beach; our pianist is Mildred French; our director is Esther V. Lamb.

Following we print for your perusal a copy of our first program presented in the Assembly this year:

Blue Danube Waltzes ..... Strauss

"Little Boy Blue"—

Chorus

Duet—"Neapolitan Serenade" ..... Capua

Alice Coldiron and Frances Drake

Solo—"Love Is Just a Flower"..... Ranzato

Beth Gorman

"Where Are You Going My Pretty Maid?" ..... Caldicott

"The Harlem Goat" ..... College Song

Chorus





Athletics



The Royal

Blue



W

H



"BOB" ROGERS  
Fullback

"BEANS" EBDING  
Halfback  
Captain Elect. 007

EVERETT THOMAS  
Halfback

"JIMMIE BENSON  
Center

"EDDIE" McMURDO  
Manager

"BOB" HORSLEY  
Guard

"RIP" VanWINKLE  
End



The Royal

Blue



Foot

Ball



EMERY GOODMAN  
*Tackle*

HOWARD STOCKDALE  
*Guard*

"MEEKER" TIMMONS  
*Fullback  
Captain*

"SID" RICH  
*Coach*

CARM FARRENS  
*Quarterback*

"BUZ" LUTCHER  
*End*

"PAT" PATTERSON  
*Guard*





THE SQUAD

### Review of the Football Season

Oct. 2 .....	Wa-Hi 7	Milton .....	7
Oct. 9 .....	Wa-Hi 13	Clarkston .....	7
Oct. 17 .....	Wa-Hi 48	Hermiston .....	0
Oct. 24 .....	Wa-Hi 7	Lewis & Clark .....	33
Oct. 30 .....	Wa-Hi 0	North Central .....	0
Nov. 11 .....	Wa-Hi 0	Dayton .....	14
Nov. 18 .....	Wa-Hi 19	Pasco .....	21
Nov. 21 .....	Wa-Hi 27	Pendleton .....	7
Dec. 1 .....	Wa-Hi 0	Yakima .....	28

### First Team Letters

Dick Timmons  
 Carm Farrens  
 Arick Van Winkle  
 Bob Horsley  
 Lewis Lutchter  
 Everett Thomas  
 Emery Goodman  
 Bud Applegate

Jimmie Benson  
 John Benzel  
 Howard Stockdale  
 Harry Ehrlich  
 Bob Rogers  
 Lewis Patterson  
 Arthur Kent  
 Melvin Simmons

### Second Team Letters

Richard Owsley  
 Allen Sprout  
 Desmond Long  
 Cedric Gogins  
 Tom Brockman  
 Leonard Schiffman  
 Bob Sherman  
 Clifford Mayo

Duane Hill  
 Mike Duncan  
 Carl Miller  
 Robert Golden  
 Tom Dunnigan  
 Arthur Frazier  
 Ivan Mackin



# The Royal

# Blue



R  
I  
P



*"Herb" Hadley*



Jackson



Hadley



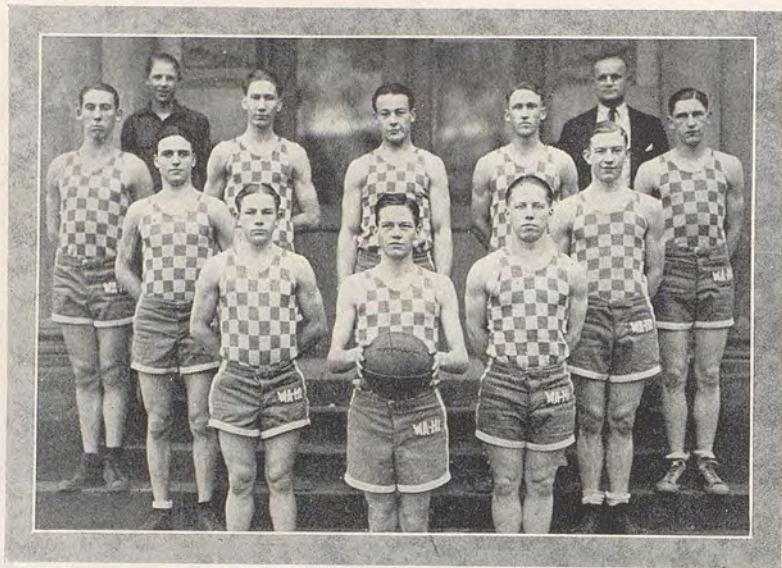
Atkins



C  
A  
M







## Basketball

### REVIEW OF THE SEASON

Dec. 18 .....	Wa-Hi 27	Prescott .....	7
Dec. 21 .....	Wa-Hi 38	Grace M. E. Church .....	12
Dec. 24 .....	Wa-Hi 22	Lewis & Clark .....	15
Dec. 31 .....	Wa-Hi 39	Alumni .....	36
Jan. 1 .....	Wa-Hi 38	Snails .....	23
Jan. 9 .....	Wa-Hi 37	Yakima .....	17
Jan. 13 .....	Wa-Hi 55	Dayton .....	14
Jan. 16 .....	Wa-Hi 30	Snails .....	14
Jan. 20 .....	Wa-Hi 63	Dayton .....	23
Jan. 22 .....	Wa-Hi 47	Athena .....	15
Jan. 30 .....	Wa-Hi 41	Clarkston .....	17
Feb. 3 .....	Wa-Hi 38	Pendleton .....	16
Feb. 5 .....	Wa-Hi 26	Clarkston .....	17
Feb. 6 .....	Wa-Hi 32	Moscow .....	24
Feb. 9 .....	Wa-Hi 42	Pendleton .....	40
Feb. 10 .....	Wa-Hi 35	Milton .....	25
Feb. 13 .....	Wa-Hi 22	Yakima .....	16
Feb. 17 .....	Wa-Hi 36	Moscow .....	19
Feb. 19 .....	Wa-Hi 21	Lewis & Clark .....	25
<b>DISTRICT TOURNAMENT</b>			
Mar. 4 .....	Wa-Hi 27	Anatone .....	15
Mar. 5 .....	Wa-Hi 28	Endicott .....	18
Mar. 6 .....	Wa-Hi 31	Clarkston .....	17
<b>STATE TOURNAMENT</b>			
Mar. 11 .....	Wa-Hi 18	Hoquiam .....	23
Mar. 12 .....	Wa-Hi 29	Davenport .....	15
Mar. 12 .....	Wa-Hi 25	Centralia .....	21
Mar. 13 .....	Wa-Hi 31	Fairhaven .....	26

Letters were awarded to the following boys:—Lynn Croxdale, 2nd award; Virgil Perry, 2nd award; Cecil Bramhall, 2nd award; Dick Tompkins, 1st award; Byron Dague, 2nd award; Harry Ebding, 1st award; Dick Timmons, 2nd award; Alex Weber, 1st award; Jimmie Benson, 1st award; Ralph Gibbons, 1st award.





Bramhall (Forward)



Timmons



Gibbons



Dague (Guard)



Weber



Cap. Croxdale (Guard)



Ebding



Perry (Forward)



Benson



Tompkins (Center)





## Track

Spring 1925

The first competitive event of Spring Athletics for 1925 was the Inter-Class meet, which was held on the Whitman track on April 17. The Seniors won the competition by a margin of thirty points.

The first interscholastic meet of the year was held in Pendleton on April 25. The competing teams were La Grande, Pendleton and Wa-Hi. La Grande won first place with  $63\frac{1}{2}$  points; Pendleton second with  $53\frac{1}{2}$  points; and Wa-Hi third with 30 points.

At the Waitsburg track meet, held May 2, Wa-Hi took first place with 78 points. The other teams in the meet were Waitsburg, Starbuck, Two Rivers and Pomeroy.

The last event of the track season was the meet at Endicott on May 9, in which Wa-Hi won the meet by 2 points over Pullman High School.

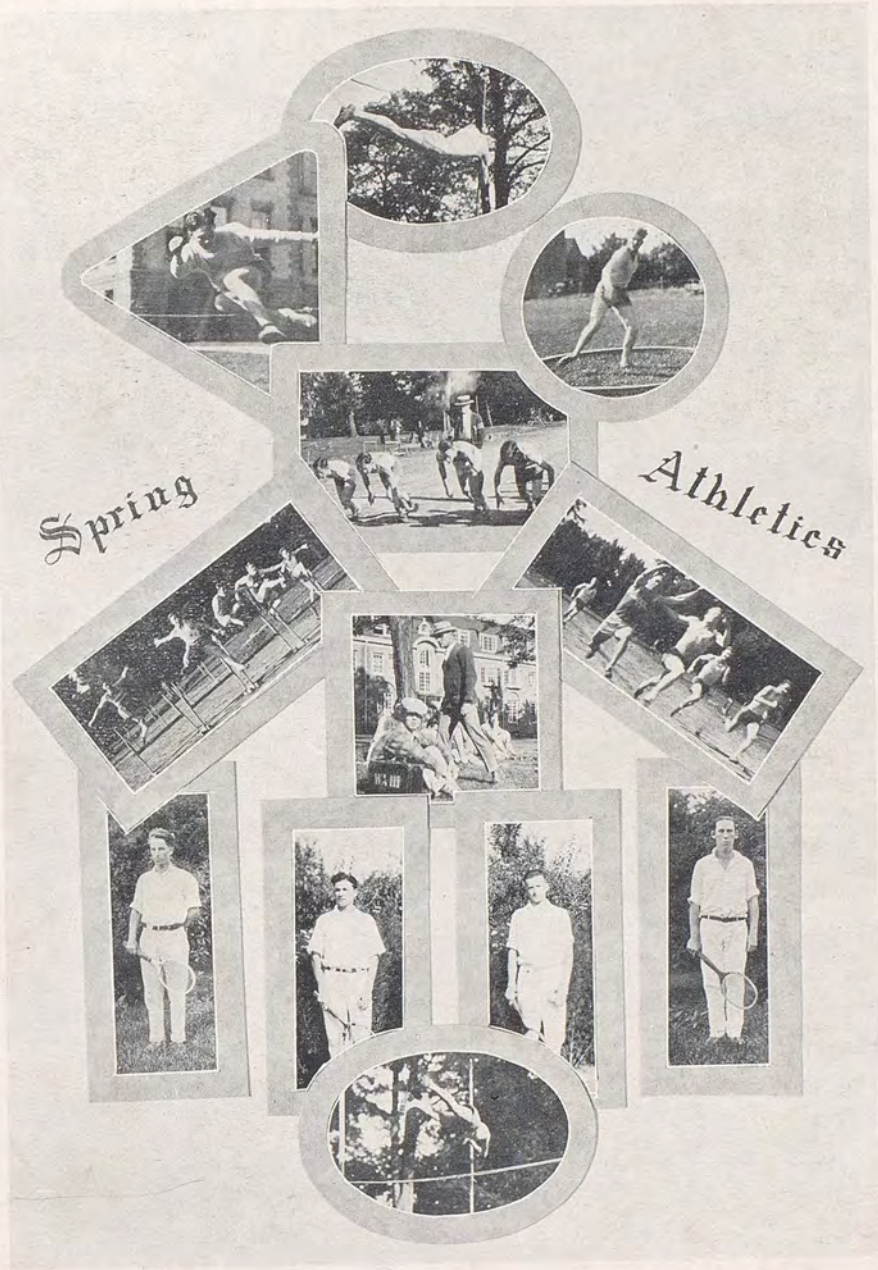
The increased interest in Spring Athletics in 1925 foretells a prosperous spring season in 1926.

Winners of letters this year were:

Ward Miller  
Robert Garrett  
Neil Barnhart  
Raymond Coble

Eldwyn Briggs  
Eldon Woodhall  
Daniel Bogle





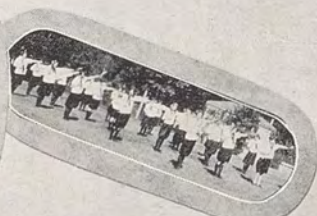




W  
&  
H  
i



G  
i  
r  
l  
s



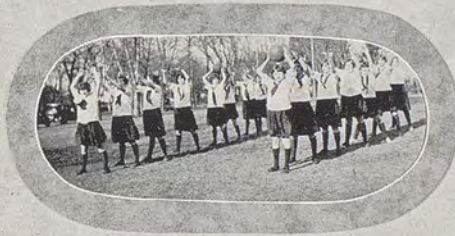
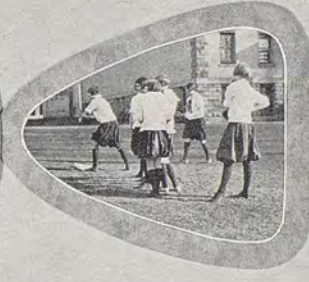
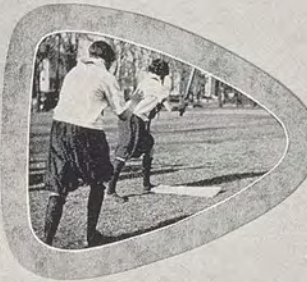




G  
Y  
M



C  
L  
A  
S  
S





The Royal

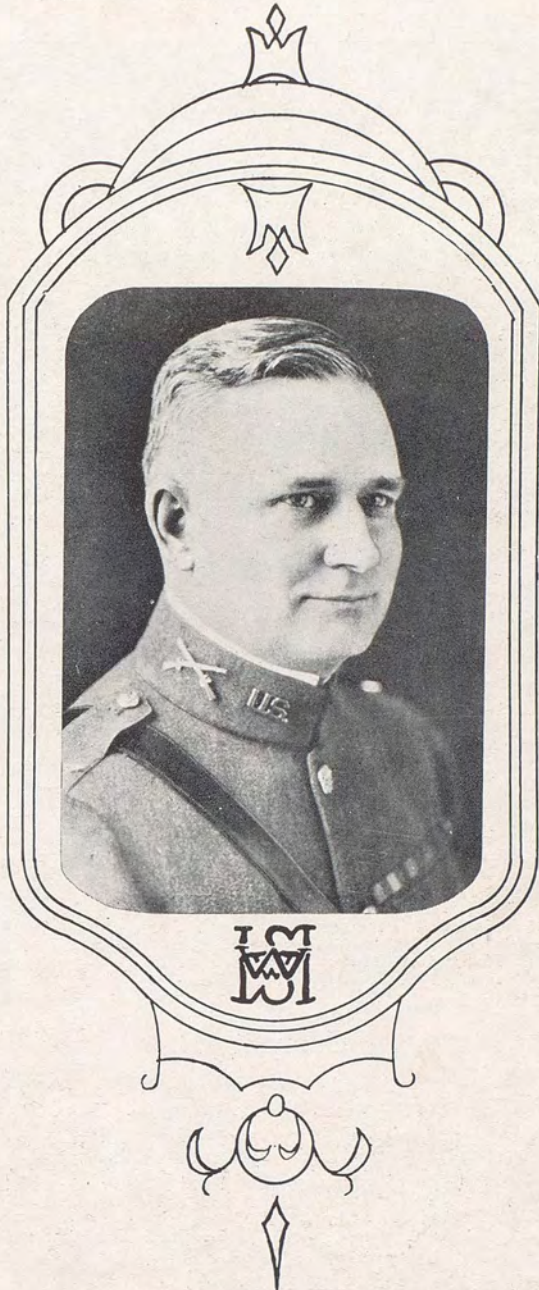
Blue





The Royal

Blue



*This Section is Dedicated to*  
**Jesse Morton Holmes**  
Major U. S. Army, Retired  
Colonel, Infantry, O. R. C.



# The Royal

# Blue



## Battalion Headquarters

J. M. HOLMES—*Commandant*  
Major U. S. Army, Retired  
Colonel Infantry, O. R. C.

JOSEPH EVERSOLE  
Sgt. D. E. M. L. (R. O. T. C.)

## Staff Officers

Major (Commanding Battalion)	First Lieutenant (Supernumery)	Battalion Sergeant Major
Edward Unruh	Allen Crocker	Allen Walton
First Lieutenant (Bat. Adj.)	Second Lieut. (Bat. S. O.)	Battalion Color Sergeants
William Ferguson	Gordon McLean	Alpheus Morrison (Nat. Col)
		Virgil Davin (Unit Color)

## Company A

*Captain*—GEORGE SEEBECK

First Lieutenants—	First Sergeant—	Sergeants—	Rex Monroe
Robert Golden	Edwin McMurdo	Paul Carter	Henry Butherus
Jack Kirkman	Supply Sergeant—	Jack Garriott	Robert West
	Kennard Bennett	Willard Ormsby	Richard Crabbe
Second Lieutenants—	Platoon Sergeants—	Raleigh Nelson	Douglass Staudenmair
Sanford Sherman	Houghton Gross	Clifford Mayo	Kenneth Wills
(1 Vacancy)	Donald Wolf	Corporals—	George Converse
		Raymond Coble	Gilbert Harding

## Company B

*Captain*—CLIFFORD LONG

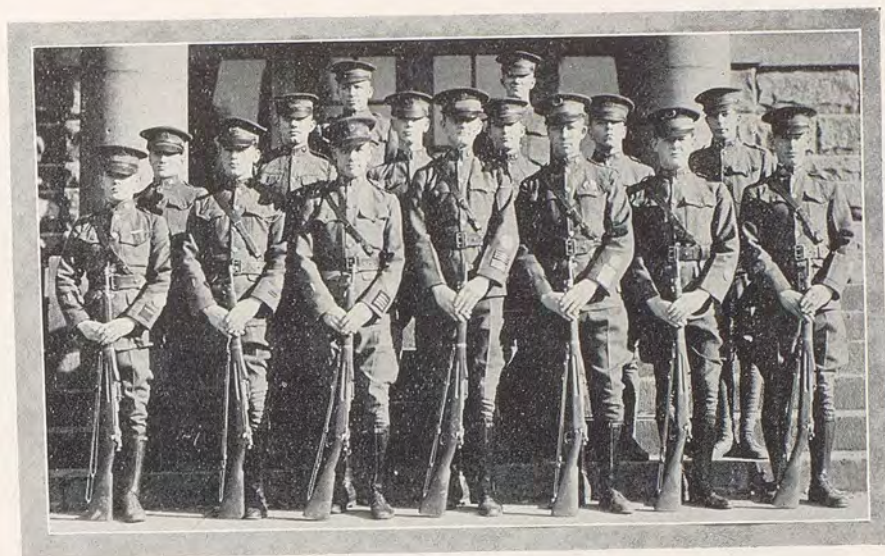
First Lieutenants—	First Sergeant—	Sergeants—	Melvin Simmons
Joe Kirkman	Chester Adams	Robert Moore	Carroll Colwell
Fred Sundquist	Supply Sergeant—	Lewis Collard	Gerwyn Jones
	Alex Campbell	Robert Withee	Elmer Watson
Second Lieutenants—	Platoon Sergeants—	Fred Gauch	Stanley Quinn
Fred Reed	Carl Miller	Harold Banks	Fred Shields
(1 Vacancy)	Lewis Foss	Corporals—	Robert Sherman
		Leonard Schiffman	David Lehrer

## Company C

*Captain*—LELAND ARCHER

First Lieutenants—	First Sergeant—	Sergeants—	Eugene King
Ralph Miller	Leland Demory	Earl Young	Fred Rohn
Chester Morrison	Supply Sergeant—	Paine Paul	Laurel Baker
Second Lieutenants—	Robert Melosh	Emerson Waggoner	Percy Aldrich
John Kelly	Platoon Sergeants—	Herbert Brown	Paul McGowan
Albert Gruber	Melvin Kennedy	Corporals—	Myron Davis
	Donald Castle	Albert Heinbigner	Theodore Brown





## Wa-Hi R. O. T. C. Unit Rifle Team

The official announcement of the result of the Ninth Corps Area R. O. T. C. Gallery Rifle Matches, held between January 26 and February 25, was received from headquarters at San Francisco March 19, and it discloses the fact that the high standard made by our unit rifle team in past years has been fully maintained this year. In fact, on the list of teams entered by fifty colleges, high schools, and military schools in the eight states comprising the Ninth Corps Area, it stood fifth and was beaten by only a small margin by four other teams.

As a result of its high standing in the Ninth Corps Area matches, Wa-Hi's team has been selected again this year as one of the few teams to represent it in the National Inter-collegiate gallery matches to be fired between March 16 and April 16 under the auspices of the National Rifle Association. This makes the fifth consecutive year that the honor has fallen to our unit, and is believed to be the record.

The following men compose the unit rifle team:

Capt. Clifford Long .....	569	Pvt. Henry Butherus .....	545
Capt. George Seebeck .....	566	Pvt. Robert Woods .....	544
2nd Lt. John Kelly .....	558	Pvt. Ephram Calvert .....	539
1st Lt. Robert Golden .....	579	Capt. Leland Archer .....	537
1st Lt. W. Ferguson .....	547		
1st Lt. Joe Kirkman .....	547	Aggregate team score .....	5484

Wa-Hi also has a team of five members (consisting of the five high men on the unit rifle team above mentioned) entered in the National Match for the trophy to be awarded by William Randolph Hearst, the famous newspaper man.





### R. O. T. C. Sponsors

One of the most attractive features of the Military Unit is the R. O. T. C. Sponsors, who are always seen at the reviews and parades, dressed in white. These Sponsors are chosen from the girls of the student body at large to represent the band, battalion and companies.



Lutz MacMartin Moore Ramsbeck Thompson

### Sixth Annual Grand Military Tournament

Plans are now being made for holding the Sixth Annual Grand Military Tournament. The date will be sometime in the latter part of May, and the place probably will be Ankeny Field, Whitman College campus. It is anticipated that the competitive spirit will be even keener and the big sham battle even more sanguinary than has been the case in former tournaments, if such a thing is possible. Plenty of ammunition is available for the latter..





## Events of the Year

The biggest event of the year and in the history of the Wa-Hi R. O. T. C. occurred last summer when word was received in Walla Walla that, as a result of the showing made by the unit at the last annual Federal inspection, Wa-Hi had received the much coveted rating of "Honor High School" for the academic year 1925.

Inasmuch as only a small percentage of the high schools can achieve such a rating as this, together with its record for the year 1924 (winning of the Intercollegiate and Interscholastic R. O. T. C. National Indoor Matches), indicated unmistakably that the Wa-Hi Junior R. O. T. C. stands second to none in the matter of general efficiency. This is all the more noteworthy in view of the fact that the unit is under a serious handicap in competing with many of the endowed schools in the larger cities, as they have far better facilities for conducting military training. Therefore, it is only by having maintained an extraordinarily high standard with the limited facilities available that the unit was able to reach this goal.

As a result of the rating mentioned, every cadet in the Wa-Hi R. O. T. C. has been awarded a bright red star to wear on the right sleeve of his uniform coat as a distinctive badge indicating that he belongs to an "Honor High School" unit, and of which he may well be proud. But it also constitutes a high-water mark of achievement which must be repeated each year, and this can be done only with the utmost striving and the highest spirit of cooperation on the part of every individual cadet, and effort and team play of the highest order on the part of the unit as a whole. May we ever hold these laurels so deservedly won!





Tall Boy



Green

Fresh



Shiky

Missing Links



Harry



Evolution of Allen



Mike



Prep

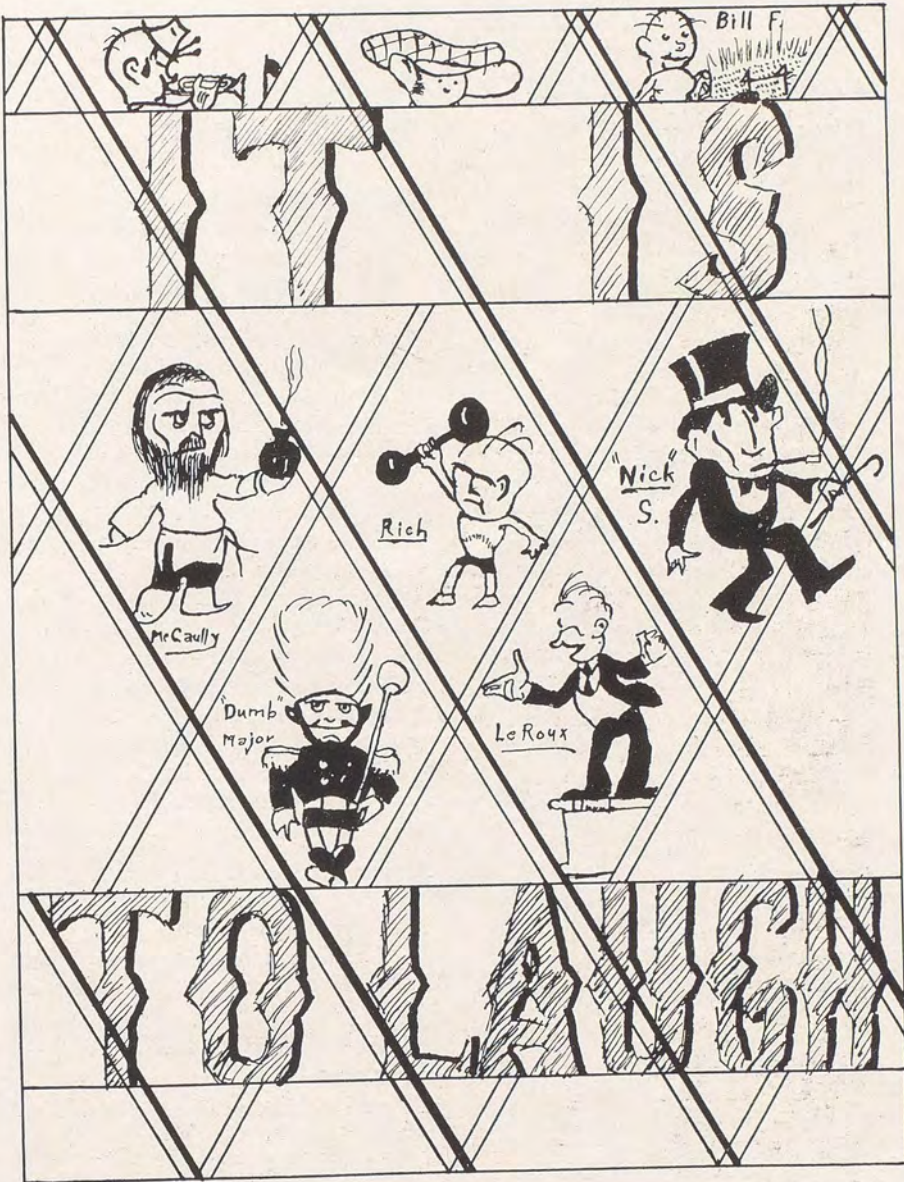


Sleepy



Senators









## Missing Links

### OUR CURSE BE ON YOU

If anyone has read these jokes,  
And makes any sarcastic pokes,  
We hope to gosh he goes and chokes.

\* \* \* \*

### DERE EDATER

A wonderful editor is David Lehrer;  
We're very afraid he's not all there.  
His talk seems to me  
All hot air to be—  
But at loving he sure is a bear.

\* \* \* \*

Donald Lutz: "I had such a good  
joke to tell you this evening but I see  
you are not in condition to receive it."

Ruth Fulton: "Why?"

Don. Lutz: "Cause if your face  
lights up the powder is liable to go off."

\* \* \* \*

In Wa-Hi a teacher named Clark  
Thought it a wonderful lark  
To expel for three days  
Victims of Spring fever craze,  
If excuses for absence were in dark.

\* \* \* \*

There was a red-headed Freshman  
named Drew  
Whose eyes were a light-greenish blue  
His friends called him Cy  
Cause he never said die  
And what could the poor fellow do.

\* \* \* \*

### APRIL FOOLS

Miss Yeomans.  
Miss Solberg.  
Miss Dean.

As a project in the interpretation of  
statistics in one of my sociology classes  
to determine the approximate percent of  
pupils who enter class with gum in their  
mouths will you kindly obtain that data  
from your 2nd per. class and bring it to  
me so that I can have it for my 4th per  
class?—*Jordan.*

### WA-HI ROOTING SONG

(Sung to the tune of "Yes Sir That's  
My Baby.")

Yes, sir, we're from Wa-Hi  
Watch us, give 'em a black eye  
Yes, sir we're from Wa-Hi now.  
Yes, sir we'll defeat 'em  
Just you, watch us beat 'em  
Yes, sir, we'll defeat 'em now.  
Every day, in every way  
When we see the game we'll say  
Yes, sir, we're from Wa-Hi  
Watch us do or die  
Yes, sir we're from Wa-Hi now.

\* \* \* \*

Rolland Speer: "Did any of you see  
a German police dog?"

Crystal Ward: "Did he have on his  
uniform?"

\* \* \* \*

A Chinaman was hunting in the  
mountains. Suddenly he turned and  
saw a bear coming along, sniffing at his  
tracks. So he said, "Huh, you like me  
tracks, I makee some more."

\* \* \* \*

There was a young man named King,  
Who loved to hear dollars ring;  
So he landed a job,  
The Annual to rob,  
But his ambitions fell flat with a bing.

\* \* \* \*

### MAJOR UNRUH CALLS THE ROLL

General Alarm  
Colonel O'Wheat  
Major Premise  
Captain Headquarters  
Lieutenant Puttees  
Lieutenant Comander  
Sergeant Locke  
Sergeant Atarms  
Corporal Punishment  
Corporal Chevrons  
Private Depot  
Private Telephone





SLOGAN'S ALLEY

"Fatima," he moaned, "there's a reason."

"Ask dad, he knows," she snapped. "It happens to four out of every five," he whimpered, as he obeyed "his master's voice."

"Such popularity must be deserved," her father thundered.

"Save the surface and you save all," replied the disillusioned youth.

"Oh, Fatima," he almost shouted, "elope with me—it's a universal car!"

"Ask the man who owns one," she answered haughtily.

"Isn't it time to retire?" he begged with the look of a hurt dog.

(Next day) "The flavor lasts" she said, as she prepared "a skin you love to touch."

(Looks out window and sees youth's dead body lying in a pond) "It floats," she murmured, and then as it sunk, a voice said: "Going, going, gone."

\* \* \* \*

THAT HUMAN MACHINE

Doctor—"You have flat feet."

Percy Aldrich—"Well, do you want to put on a couple of new ones, or will it be cheaper to pump them up?"

\* \* \* \*

Man—"What do you think of the average man?"

Woman—"There's no such thing; they are all below the average."

\* \* \* \*

The joke staff respectfully submits the following books as worthy additions to the school library:

Does a Hay Stack Burn UP or DOWN? (A debating book by Hershel Hadley)

How to Drive Mules. (by I. Lashem.)

Learn the Hardware Business from the Ground Up, (by Sir Fawcett Tubbs.)

Foot and Fingerprints, (by H. Clark).

Mr. Reed—"Sulphur exists in allotropic forms."

Bob Moore—"A lot of it around the equator, eh?"

\* \* \* \*

Miss Boucher—"The proper thing in an oration is to move your audience; what would be the best way to do this?"

Gordon McLean—"The best way to move an audience is to holler 'Fire!'"

\* \* \* \*

TOO SHORT

Frances Clark—"Here's your short cake."

Miss Yates—"You call that short cake? Take it out and BERRY it!"

\* \* \* \*

Cat's—"Would you marry him if you were me?"

Meow—"I'd marry anyone that asked me if I were you."

\* \* \* \*

Myrtle Burdick—"I confided the secret of our engagement to three of our dearest friends."

Ralph Gibbons—"Three all told?"

Myrtle Burdick—"Yes, all told."

\* \* \* \*

Miss Boucher: "When did Scotchmen learn to swim?"

David L.: "I'll bite."

Miss B.: "The day the first toll bridge was put in use."

\* \* \* \*

Mrs. Wood: "My son certainly keeps regular hours."

Visitor: "An up-to-date young man eh?"

Mrs. Wood: "Yes; he gets in at two o'clock in the morning and gets out of bed at two in the afternoon."

\* \* \* \*

Daughter: "Jack and I have parted forever."

Mother: "Good gracious! What does that mean?"

Daughter: "Means that I will get a five-pound box of candy within an hour."





## Links

### SONGS HEARD AT WA-HI

"Always"—Duet — Purdy Cornelison and Frances Clark.

"Somewhere a Voice is Calling"—Allen Crocker.

"In the Sunshine of Your Smile"—Archie Berreman.

"Your Eyes Have Told Me So"—Delvin Sickler.

"Absent"—Paul Peterson.

"Lost Love"—(Copyrighted by Leo Carde).

"Glow Little Glow-Worm Glimmer"—Girls Gym Classes.

"I Hear You Calling Me"—Ralph Gibbons.

"Goodbye"—Bevo.

"Leave Me With a Smile"—Albert Gruber.

\* \* \* \*

Miss Maxwell—"Soldiers must be very dishonest."

Clifford Long—"What makes you think so?"

Miss M.—"Well, I hear it's quite usual that a sentry be relieved of his watch."

\* \* \* \*

### QUESTION COLUMN

"Dear Editor: How long should I let water boil?"

Answer: "Until it starts to burn, then set aside and allow contents to cool."

(Copyright 1926, Auntie Toxine's Kitchen Helps.)

\* \* \* \*

Miss Hamm—"Charlie, when was the Knickerbocker period?"

Chas. Richmond—"Just before the long pants period."

There was a young man named Ransom  
Who in golf pants was quite handsome  
He made some bum jokes  
And sly silly pokes  
And had to get out by the transom.

There is a young lady named Garner  
Who really is some little charmer  
She speaks and orates  
And wins the debates  
Till all the contestants say "Darn'er."

There was a young man named Gruber  
Who belonged to the period of Tudor  
He paled with a girl  
Who wore a false curl  
And when he found out he sued her.

There is a young lady, McGhee  
Who can handle a club to a tee  
When she comes nigh  
Balls and grass fly  
Some day a champ she'll be.

There was a young boy name Bevo  
Who had a just cause for to griev-o  
For a girl named Verna  
Him she spurna  
And Wa-Hi at mid term she leav-o.

A maiden at college named Breeze  
Weighed down by A. B's and M. D's  
Collapsed from the strain  
Said her Doctor "It's plain  
You are killing yourself by degrees."

\* \* \* \*

Mr. Lacey: "What caused the whole pep band to start fighting?"

Wesley Roeder: "Mr. Tilley caught two of them playing the same tune."

\* \* \* \*

### YOUR BEST FRIEND WOULDN'T TELL

There once was a boy named Moses,  
Who beshowered the girls with roses.

But for this young top  
The girls wouldn't flop,  
'Cause the poor devil had halitosis.

—By Lister Rene





Links







## Tru Blu Crime

### WIFE MURDERS SPOUSE AS HE SLEEPS

*Another Horrible Hammer Murder Terrifying Inhabitants of Smithson Township.*

Pretty Mrs. Jones, nineteen year old wife of C. Wesley Jones, who was charged with killing her young husband with a hammer while he slept, was acquitted this afternoon by the jury after defendant testified that her husband brought crackers to bed three nights straight, and the court was justly indignant at such proceedings. In telling Mrs. Jones of her acquittal, Judge Ing-schwartz commended her on her brave action, and said that if others would follow her example the world would soon be rid of pests.

\* \* \* \*

### ANTIQUUE DEPARTMENT

First Ham Actor (Stan Atkins)—  
"Who's that lady you were walking with last night?"

Second Ham Actor (Delvin Sickler)—  
"That wasn't no lady, that was my wife."

Dorothy Pullen—"Why does a chicken cross the road?"

Marybelle Walters—"I don't know."

Dorothy Pullen—"Because it can't go around."

Archie Berreman (at Pasco)—"Shay, brother, where's the other side of the street?"

Frank LeRoux—"My word, why, it's right over there."

Archie Berrieman—"I was shust over there, and they said it was over here."

\* \* \* \*

C. Appendicks, in a recent scientific paper says that Miss Blalock is crossing lightning bugs with clams so you can dig for them in the dark.

*Page One Hundred Forty-six*

### POST-MORTEM CHAT

Two Irishmen were working on the top roof of a building one day when one of them made a mistake and fell to the ground. The other fellow leaned over the edge of the roof and said: "Are ye dead or alive Mike?" "Oh I'm alive Pat," said Mike. "But ye are such a liar, Mike, I don't know whether to believe ye or not," says Pat. "Well, then I must be dead," said Mike for ye would niver call me a liar if I was alive."

\* \* \* \*

### GRAND CONTEST!

### PRIZE WINNERS!!

Simply Give the Correct Answers to These Questions—Winners Published in the Next Issue

Work Must Be Individual.  
No Helps Necessary.

For only 50c the editor will give the answers.

*Sign on the Dotted Line and*

**SEND IN TODAY!**

Where did Mr. Clark get his detective training?

Why does Mr. Lacey look at his watch during assembly?

For whom does Carroll Palmer wait at the North Park entrance?

Who sends Virginia T. valentines?

What fish or other brain food does Miss Yates fed Ruth?

Are all Walters smart?

How does it feel to sit on a shelf?

Why are all meetings very important tonight?

Who are the lucky ppeople who get Eh Kah Nams with I. O. U.'s?

Are the W. W. paddles of hard or soft wood?—Ask Glen Eubanks.





## ADVICE TO GIRLS

"Dear Aunt Jemima: A boy asked me to go to a dance; shall I go?"

—Jazz Baby.

Ans. Yes, if he has a nice car to take you in.

"Dear Aunt Jemima: I wish to become a manicurist; what course shall I take in college?"—Cuticle Sallie.

Ans. Take a course in index filing and cut your classes frequently.

\* \* \* \*

Clerk—"You might try our Rip Van Winkle rugs."

Customer—"Why are they so good?"

Clerk—"They have an unusually long nap."

\* \* \* \*

## CLASSIFIED ADS

For Rent—Large over-stuffed gentleman's furnished bedroom, reasonable terms.

For Rent—A completely furnished house by a gentleman with green shutters, one dollar down and a dollar a week.

For Sale—A 1925 Universal car with a fresh coat of save the surface and you save all.

\* \* \* \*

## LOST, STRAYED OR STOLEN

An able-bodied boy about six feet tall with baby-blue eyes and the cutest dimples you ever saw. The initials on his handkerchief are J. M. Return to Margaret Saxton, Roll room 31, and collect an air mail stamp as a token of appreciation.

\* \* \* \*

Two old maids of somewhat advanced age were discussing the Christmas holidays. "Sister Florence" said the younger one "would a long stocking hold all you want for Christmas?" "No Elmira" said the older girl, "but a pair of sox would."

## ADVERTISEMENTS

Gold Dust Twins—Lehrer and Gruber.  
They do the work.

Lux—Won't hurt your hands.

Dear Sir:—I once had a skin the girls loved to touch, but after spending two weeks at Camp Murray, my hands became rough and ugly, because I had to do my own washing. Before I left, one of the girls at "Tate's" recommended "Lux" to me; I have used fifty boxes and now my hands are of the old sweet softness.

Yours gratefully,

Leo Carde

Y. M. C. A., Walla Walla, Wash.

California Fig Syrup  
(Used the World Over)

Dear Doctor—

Before taking your medicine I could not lift the baby; after taking three bottles I can now whip my husband.

Mrs. Lacey.

Cond Company, New Yawk.

Dear Sirs:—I am very happy to recommend your two creams. Since using one at night and one as a base for my powder, I have developed such a beautiful complexion that the faculty was completely surprised at my debut as a charming young teacher.

Yours very truly,

A. Rip Van Winkle

\* \* \* \*

## LADY OF THE LAKE

Tom Leake: "Egad me thinks yon ankle is a very trim one."

Nick Sullivan: "Forsooth it is very shapely."

Les. Rourke: "Zounds it does resemble an hour glass." (for curves)

Bob Lenfesty: "Verily I say it."

\* \* \* \*

Miss McIntyre—"What kind of a condition is this: 'If I had ten cents.'"

Ned Ransom—"Contrary to fact."

\* \* \* \*

(Hal E. Tosis is the name of the student who discovered garlic.)





## Awards

### To Faculty Members—

Miss Katharine Blynn, head of Mathematics Department, was awarded the degree of Master of Arts, *honoris causae*, by Whitman College in June, 1925. The presentation read:—"Katharine Harriet Blynn, a most faithful defender of learning, a most wise teacher, who for twenty years in this city has guided our youth toward culture"

Awards made in various departments of school life for 1926:

### Wa-Hi Stock Judging Team at—

Walla Walla County Fair—Falkenberg Trophy.

Washington State Fair, Yakima—1st place.

Tri-State Contest (Club judging)—7th place.

International Stock Show, Portland—13th place.

### Walla Walla Poultry Show (individual awards)—

Laurel Baker—2nd  
Melvin Krumbah—3rd  
Walter Fields—4th  
Hugh Smith—5th  
Dan Tuke—5th  
Percy Aldrich (Special award)

### Expert Typing—

#### Gold Pin Underwood Typewriter

Martha Blahm  
Carl Miller  
Helen Fields

### D. A. R. American History Prize:—

Roy Kirk—1st place

### Shorthand Experts—

Harold Boylan  
Helen Fields  
Vera Hogben

### Girls Athletic Awards in Basketball—

Isabel Kane  
Jeanette Hand  
Dorothy Pullen  
Alice Craig  
Bertha Trowbridge  
Blanche Schiffman  
Iris Hoon  
Ethel Alexander

### National Oratorical Contest—

Hazel Gross '26

### Eh Kah Nam Oratorical Contest—

Hazel Gross '26, 1st award  
Lorraine LeRoux, '26, 2nd award

*Pictures entered too late to be classified*



JULIA SCHMITZ—Senior  
*General Course*  
Nissaki Camp Fire (2); Aa Ca Wa Ya (2); Girl Reserves (1); Art Club (4); National Honor Society (4)

ALPHEUS MORRISON—Junior  
MARTHA BOSTON—Sophomore  
MARTHA HOLWAGER—Sophomore  
MARY KING—Sophomore





Art Staff of 1926 Royal Blue

## In Appreciation

*The Annual Staff of 1926 wishes to take this opportunity to thank the following people for their splendid support of the 1926 Royal Blue. Without their splendid support we would never have hoped to attain the high degree of perfection which the book this year shows.*

*A great deal of thanks goes to the student body for the support it has given in the sales of the book.*

*For the art work we thank the Mechanical Drawing Department under the supervision of Mr. Steelsmith. The work that came from this department was accurate in every respect. We also wish to thank Gibson Danes and Ralph Jackson for the special art work which they did.*

*The following Sophomores, working in the Annual Room during the whole year, deserve a great amount of credit; Helen May, Fred Bayles, Elizabeth Shuham, Bethel Goodman, Donald Lutz, Zola McDougall, Beth Gorman, Edna Lester, and Robert Aldrich.*

*For their kind help in helping finance this year's book we sincerely thank the Honor Patrons (Page 151).*

*The staff wishes to express its gratitude to Mr. Fred Wiman of the Western Engraving and Colortype Company, our engravers, for his valuable suggestions on art work sent to us by him; to Mr. Gibbons, our printer, for his courtesy and generosity; and to Mr. Eggers, our photographer, for his kindness and promptness in getting out the pictures.*

*The success of this number of the Royal Blue is largely due to Miss Boucher, the advisor. She has given her time and valuable assistance gladly at all times. The staff is glad to take this opportunity to thank her.*



The Royal

Blue



# Autographs

*Name and Number, Please*



The Royal

Blue



Honor Patrons of the  
1926 Royal Blue

THE COLLEGE INN

THE MIDWAY

THE BOOK NOOK

PAYNE-JAYCOX AND COMPANY

K. FALKENBERG, JEWELER

A. M. JENSEN COMPANY

THIRD NATIONAL BANK

THE PANTORIUM DYE WORKS

THE WESTERN ENGRAVING AND  
COLORTYPE CO., Seattle, Washington

EGGERS STUDIO

INLAND PRINTING COMPANY



*Photographs by*  
EGGERS STUDIO, WALLA WALLA

*Engraving by*  
WESTERN ENGRAVING AND COLORTYPE CO.  
SEATTLE, WASH.

*Printing by*  
INLAND PRINTING COMPANY  
WALLA WALLA









